



# RGBlink®

## miniEDGE

### 10 Channel All-in-One Switcher



mini-edge SDI features four 4K HDMI 2.0 inputs and four 3G-SDI inputs, one UVC and one NDI bi-direction input & output, supporting digital embedded audio and video signals from PC, Camera and more. Also analog audio by 1 x Phantom, 1 x Line in and 1 x Mic, and a Bluetooth audio.

There are two separate HDMI outputs for multi-viewer Preview, Program or Test Pattern. One USB 3.0 output supports YUY2 and MJPEG capture formats, which can be recognized as a webcam for streaming to Facebook, YouTube, ZOOM, etc.

The UVC can be used bidirectionally for USB disk recording, wireless speaker and wireless microphone. This function can be applied to devices such as RGBlink AI mini. The Ethernet port with NDI license enable is bi-direction too, which ensures that the NDI encoder and decoder can work at the same time.

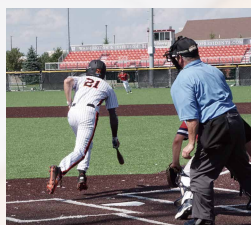
mini-edge SDI is built in with 5.5-inch TFT panel for menu operation and multiviewer video display.

Compared with mini-edge, mini-edge SDI has 4 more 3G SDI inputs, a ready-to-be-licensed bidirectional NDI, and also noise reduction for audio inputs. Else it features dynamic output control, multi-view preview, picture in picture, chroma key, transitions, on board PTZ camera controls and much more.

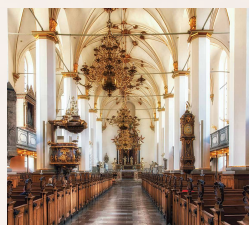
mini-edge SDI is webAPP ready. It is also integrated with TAO Cloud for remote control and can stream to at least 4 content platforms at the same time.



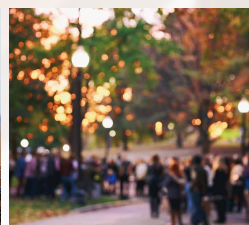
Education



Sport



Worship



Event



Conference



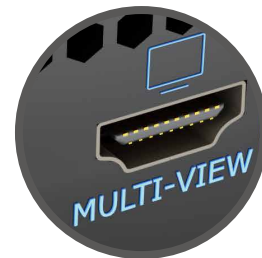


## Full-Featured Keyboard Controls at a Glance

The onboard 5.5-inch HD full-color screen monitors all input channels and output images in real time. Full-featured keyboard, fast control of any function.



Configurable HDMI Output for live presentations



HDMI PVW port – configure for multi-view or AUX each input

# Take Full Control

## Integrated PTZ Camera Control

Forget about having multiple separate control panels for video and camera control. mini-edge SDI brings it all together, supporting industry standard VISCA or NDI protocol for PTZ control directly from the mixer. Control up to four separate cameras with pan, tilt, zoom and focus.



## Precise Fingertip Control

Integrated joystick provides tactile control for each PTZ camera. Together with the toggle on the front panel, they can control the pan, tilt, zoom and focus of the PTZ camera. Joystick and toggle are additionally dynamically assigned to settings including scale, position and crop for enhanced usability when a layer being controlled.



## Professional broadcast SDI input

Longer transmission distance and more professional broadcast SDI camera input.

\*3G-SDI supports up to 100 meters, RGBlink laboratory test data.

# Pro Color Rendering and Layers

## One-Click Chroma Key

Enable presenters to be in virtual studios and environments with Chroma Key.

Select from standard key colours and enable Chroma Key directly on mini-edge SDI without the need for an app. Refine colour selection and tolerances from the touch screen to optimise.

\* The device supports keying green and blue colors and the web-side supports keying 6 colors in total.



# Pro Level Audio

## Capture Every Sound

With two separate insert audio ports, mini-edge SDI has got external balanced mic and line level audio covered. All two ports accept TRS 1/4in jacks, with MIC supporting direct XLR connection too. Plus there is 48V phantom power directly from mini-edge SDI available too on MIC, negating the need for a separate DI, and instantly making studio mics native connections as they should be.



## Follow the Action & Always be In Sync

Set AFV for any HDMI embedded audio so the audio switches with the video source to PVW and PGM automatically.

Configure audio delay for MIC inputs or a camera input to keep audio in sync with the video.



## Monitor & Set Live

The professional audio console with dynamic button operation is both eye-catching and convenient. It provides precise control, allowing for easy volume adjustment and enabling one-key mute and monitoring, which brings the user an excellent live-streaming experience.

⌘ Bluetooth audio input supports.



# Pro Level Video

## Sophisticated Multi-Layer Presentation

Assemble visuals with multiple layers of video and graphics. mini-edge SDI offers 2 full video layers plus background image, two graphic overlays from the media pool as well.

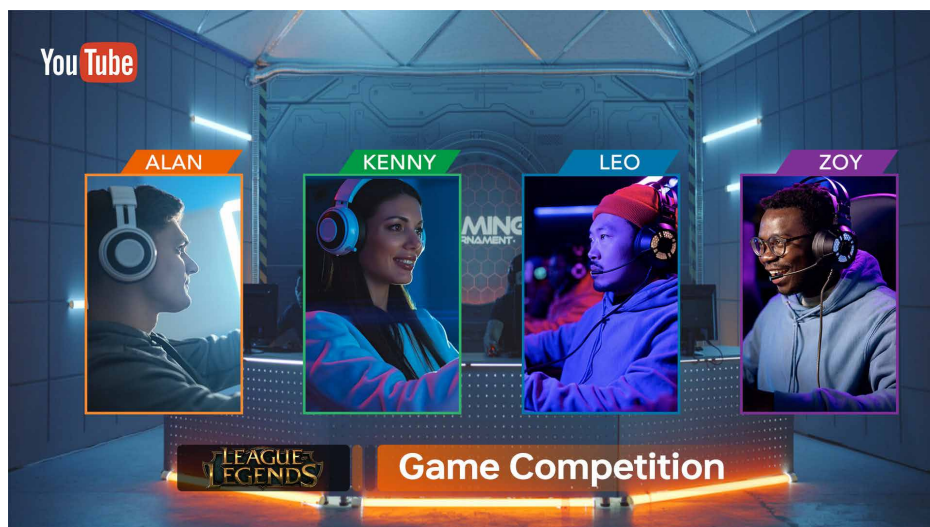


## Dynamically Scalable

Each of the two assignable video layers maybe scaled, positioned and cropped with these placed over the background.

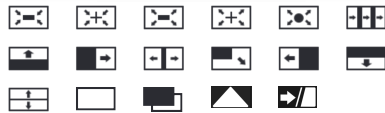
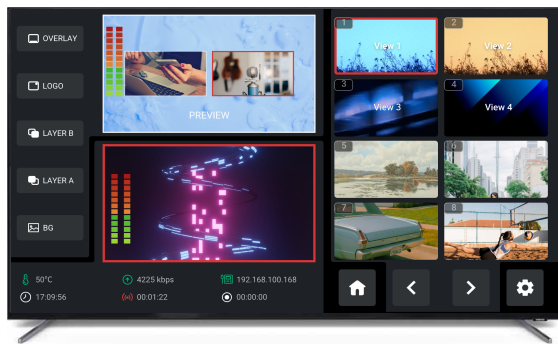
## Multiple Layer Sophistication

Besides dual video sources, also add media pool graphic overlays for lower -thirds and branding logos, and switch seamlessly between graphic elements.



## Intuitively Interactive Operation

Select any source or preset with control panel thumbnails and iconography that makes mini-edge SDI a natural intuitive way to present and stream.



## Transition Like a Pro

mini-edge SDI includes multiple DVE transition effects from preset to program, adding sophistication and effect.

## Leverage the Power of Presets

mini-edge SDI supports saving and quick recall of 16 preset scenes, including graphics, audio, and even the parameters of the PTZ position and focus enabling smooth transitions between scenes.



## Go Remote

mini-edge SDI web app companion apps for laptop and mobile allow remote use from the mini-edge SDI and the video connections. Fully integrated with the RGBlink TAO cloud control streams remote too with TAO cloud.

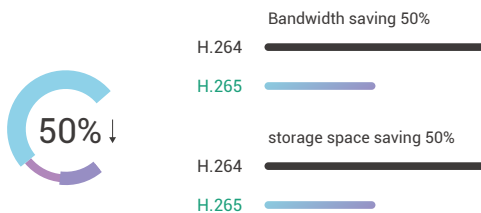


# Pro Streaming

## Enhanced Streaming

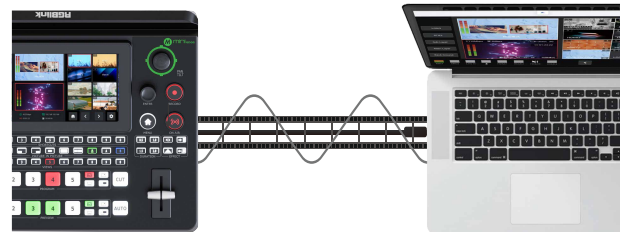
### H.265

Take advantage of advanced H.265 compression and encoding for higher performance streams.



### live stream

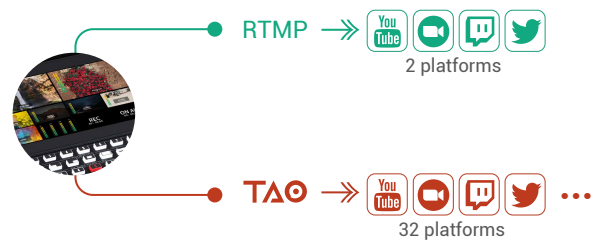
Verticarafre and vae etceaof ad sappetec26g co is cosspatible avith multiple mobile live-streaming platforms



### Capture & Share

Connect mini-edge SDI to a laptop for instant recognition as a webcam to enable capture for apps such as OBS and more of others.

Share your presentation on Teams, Zoom™ or any collaboration platform.



### RTMP(s)

Stream up to four multiple platforms simultaneously directly over IP without a laptop. And with TAO cloud integrated directly into mini-edge SDI, cloud-stream up to 32 platforms or connections at the same time.

## Recording

The USB 3.0 recording output interface can be directly connected to a hard drive with a maximum capacity of 2T.

It can simultaneously record while streaming, and the recording of 160Mbps high-definition video can last 100 hours.

Audio and video can be imported and used simply by inserting a USB disk.



Connections			Performance	
Input	HDMI 4K UVC (Webcam) 3G SDI NDI	4 × HDMI-A 1 × USB-C 4 × SDI 1 × NDI	Input Resolutions	HDMI 2.0 SMPTE 720p@50/60   1080i@50/60   1080p@24/30/50/60
Output	HDMI 2K USB (Record) USB (Stream) NDI	2 × HDMI-A 1 × USB-C 1 × USB-C 1 × NDI		VESA 1024×768p@60   1280×720p@60   1280×768p@60   1280×800p@60   1280×1024p@60   1360×768p@60   1366×768p@60   1440×900p@60   1600×1200p60   1680×1050p@60   1920×1080p@60
Audio	MIC IN  LINE IN OUT	1 × 6.35mm XLR + TS Jack (48V Phantom Power) 1 × 6.35mm TRS Jack 1 × 6.35mm TRS Jack 1 × 3.5mm mini-Jack		SDI 720p@50/60   1080i@50/59.94/60   1080p@23.98/24/25/29.97/30/50/ 59.94/60
Communication	LAN	1 × RJ45		
Power	Power Supply	1 × USB-C	Output Resolutions	HDMI/USB (Webcam) 1280 × 720@50/60   1920 × 1080@24/25/30/50/60
Control			Supported Standards	HDMI 2.0 HDCP 2.2 SDI (3G/HD/SD) USB 3.0   USB 2.0 NDI   HX2 H.265(ITU-T H.265/ ISO/IEC 23008-2)
Remove Control		TAO Cloud、webAPP		
Firmware Update		TAO Cloud		
Operational Environment			Color Space	RGB 8bit   YCbCr 4:4:4 8bit   YCbCr 4:2:2 8bit
Temperature		0° to 60° C	Video Latency	<4 frames
Humidity		10-85% RH	Audio Format	PCM/2ch/24bit/48kHz
Physical Specifications			Sampling Rate	48K
Weight	Device Packaged	0.60 kg 1.38 kg	Bitrate	24bit
Dimensions	Device Packaged	280×223×64mm (11.0×8.8×2.5in) 332×238.5×109mm (13.1×9.4×4.3in)	Record Formats	MP4 (up to 16Mbps)
In the Box			Disk Formats	FAT32   exFAT
mini-edge SDI	1		USB Power Delivery	UVC 3.0
PD power adapter	1		Supported Cables	Certified USB PD Aware
USB-C data cable	2		Input Voltage	PD 12V/3.3A
quick guide	1		Input Voltage	40W
OTG cable	1			
Order Codes				
230-0008-01-0	mini-edge SDI			