

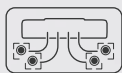
RGBlink

mini^{mx} SDI

10 Channel Streaming Video Mixer



Four 4K
HDMI Inputs



Four
SDI Inputs



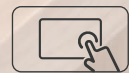
Multi-Channel
Audio Mixing



Direct PTZ
Camera Control



Dedicated Multi-View
Preview Output



Powerful Features
Touch Screen Interface

mini-mx SDI features four 4K HDMI 2.0 inputs and four 3G SDI inputs, one UVC and one NDI bi-directional input & output. It supports digital embedded audio and video signals from a PC, cameras, and more. Additionally, it has analog audio input options via 2 x Phantom, 1 x Line - in and 1 x MIC, and also supports Bluetooth audio.

There are two separate HDMI outputs for multi-viewer Preview, Program or Test Pattern. One USB 3.0 output supports YUY2 and MJPEG capture formats, which can be recognized as a webcam for streaming to Facebook, YouTube, ZOOM, etc.

The UVC can be used bidirectionally for USB disk recording, wireless speaker and wireless microphone. This function can be applied to devices such as RGBlink AI mini. The Ethernet port with NDI license enable is bi-direction too, which ensures that the NDI encoder and decoder can work at the same time.

mini-mx SDI is built in with 5.5-inch TFT touch panel for menu operation and multiviewer video display.

Compared with mini-mx, mini-mx SDI has 4 more 3G SDI inputs and a ready to license bidirectional NDI, also Noise Reduction, Equalizer, Echo, Reverberation, Voice Fusion for audio inputs. Else it features including dynamic output control, multiviewer, picture in picture, chroma Key, transitions, on board PTZ camera controls and much more.

mini-mx SDI is web APP ready, also integrated with TAO Cloud for remote control and can stream to at least 4 content platforms at the same time.

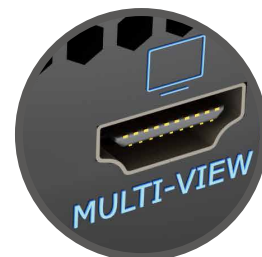


Preview on Demand

Preview and configure interactively from the touch screen display, selecting live and insert video sources. Monitor on a HDMI display with a dedicated PVW multi-view output provided.



Configurable HDMI Output for live presentations.



HDMI PVW port – configure for multi-view or any output.

Take Full Control

Integrated PTZ Camera Control

Forget about having multiple separate control panels for video and camera control. mini-mx SDI brings it all together, supporting industry standard VISCA or NDI protocol for PTZ control directly from the mixer. Control up to four separate cameras with pan, tilt, zoom and focus.



Precise Fingertip Control

Integrated joystick provides tactile control for each PTZ camera. Used it together toggle, pan, tilt, zoom and focus from the front panel. Joystick and toggle are additionally dynamically assigned to settings including scale, position and crop for enhanced usability.



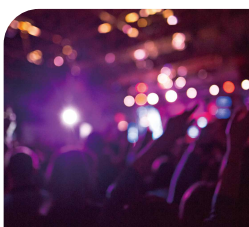
Professional broadcast SDI input

Longer transmission distance and more professional broadcast SDI camera input.

*3G-SDI supports up to 100 meters, RGBlink laboratory test data.

Live & Streamed Video for Every Occasion

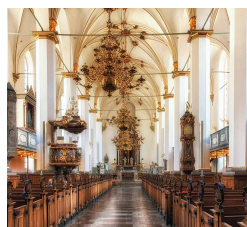
Compact yet fully featured. mini-mx SDI expands the potential for video presentation, whether in person or streamed remotely, with powerful user-friendly tools that embrace modern technologies from camera and capture to broadcasting and streaming.



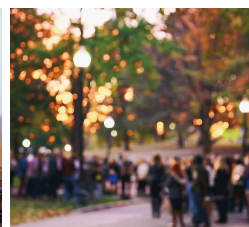
Club



Concert



Worship



Event



Conference



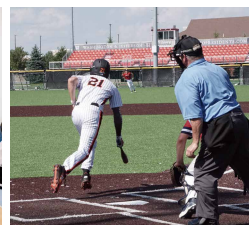
Training



Celebration



Education



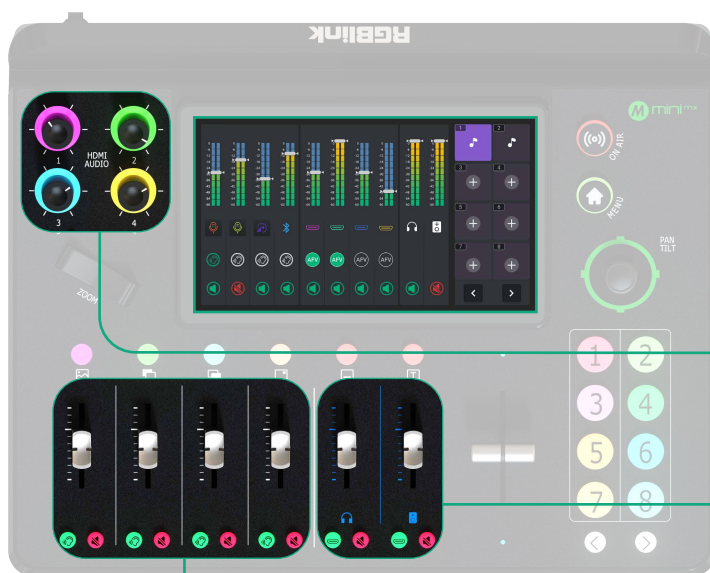
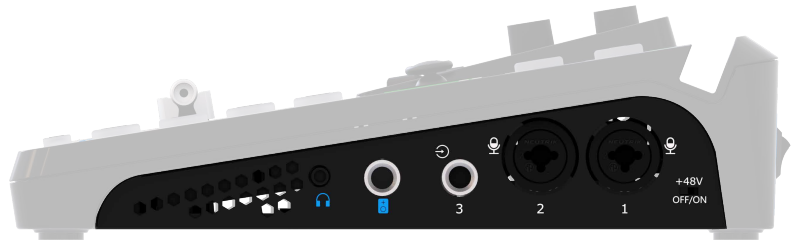
Sport

.....

Pro Level Audio

Capture Every Sound

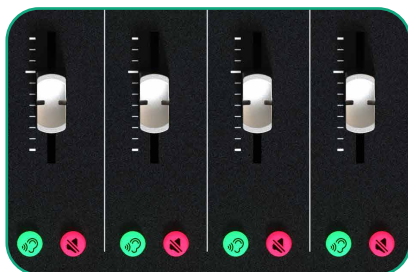
With three separate insert audio ports, mini-mx has got external balanced mic and line level audio covered. All three ports accept TRS 1/4in jacks, with MIC 1 & 2 supporting direct XLR connection too. Plus there is 48V phantom power directly from mini-mx SDI available too on MIC 1, negating the need for a separate DI, and instantly making studio mics native connections as they should be.



Follow the Action & Always be In Sync

Set AFV for any HDMI embedded audio so the audio switches with the video source to PVW and PGM automatically.

Configure audio delay for MIC inputs or a camera input to keep audio in sync with the video.



Monitor & Set Live

The professional audio console with dynamic button operation is both eye-catching and convenient. It provides precise control, allowing for easy volume adjustment and enabling one - key mute and monitoring, which brings the user an excellent live-streaming experience.

✂ Bluetooth audio input supports.

Pro Level Video

Sophisticated Multi-Layer Presentation

Assemble visuals with multiple layers of video and graphics. mini-mx SDI offers 2 full video layers plus background image, two graphic overlays from the media pool as well as dynamic OSD text overlay.

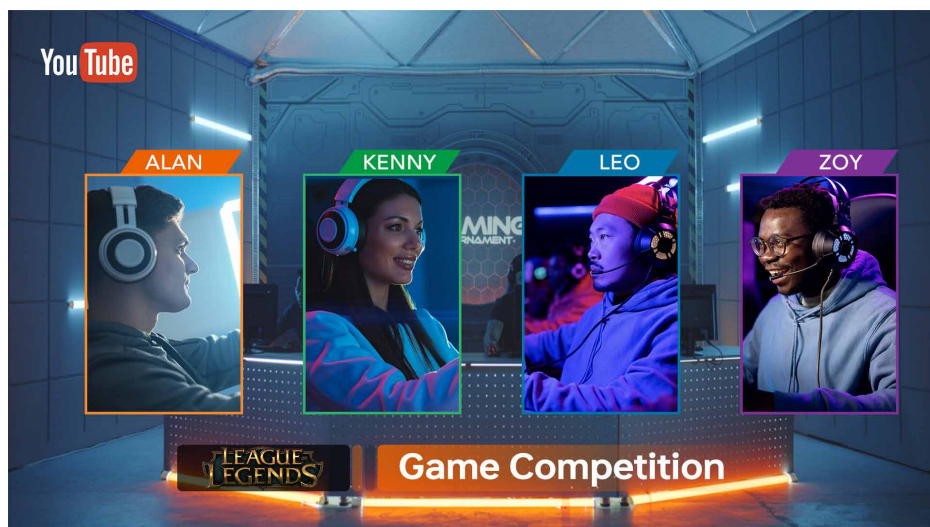


Dynamically Scalable

Each of the two assignable video layers may be scaled, positioned and cropped with these placed over the background.

Multiple Layer Sophistication

As well as video dual video sources, add also media pool graphic overlays for lower-thirds and branding logos, switch seamlessly between graphic elements.



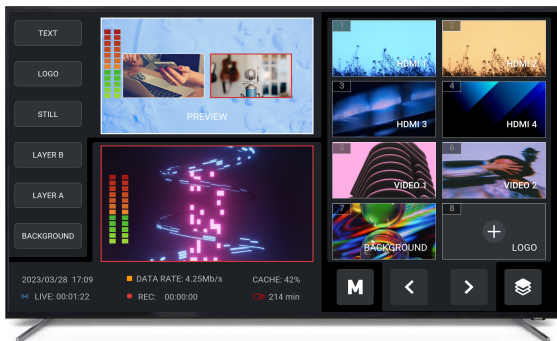
Intuitively Interactive Operation

Select any source or preset with a touch on the screen - thumbnails and iconography that makes mini-mx SDI a natural and intuitive way to present and stream.



Transition Like a Pro

mini-mx SDI includes multiple DVE transition effects from preset to program, adding sophistication and effect.



Leverage the Power of Presets

Save and store up to 16 presets on mini-mx SDI, allowing 1 touch recall of all scene settings including PTZ focuses. Make use of smooth transitions.



Go Remote

mini-mx SDI web app companion apps for laptop and mobile allow remote use from the mini-mx SDI and the video connections. Fully integrated with the RGBlink TAO cloud control streams remote too with TAO cloud.

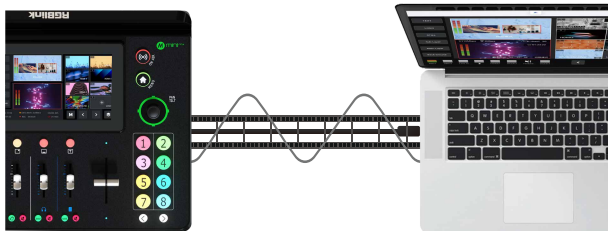
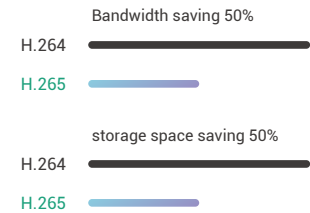


Pro Streaming

Enhanced Streaming

H.265

Take advantage of advanced H.265 compression and encoding for higher performance streams.



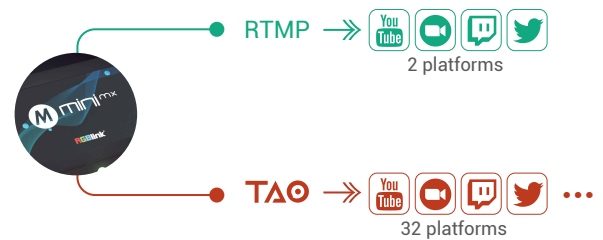
Capture & Share

Connect mini-mx SDI to a laptop for instant recognition as a webcam to enable capture for apps such as OBS and more of others.

Share your presentation on Teams, Zoom™ or any collaboration platform.

live stream

Vertical-screen live-streaming supported, which is compatible with multiple mobile live-streaming platforms.



RTMP(s)

Stream to up to two multiple platforms simultaneously directly over IP without a laptop. And with TAO Live integrated directly into mini-mx SDI, cloud-stream up to 32 platforms or connections at the same time.

Recording

The USB 3.0 recording output interface can be directly connected to a hard drive with a maximum capacity of 2T.

It can simultaneously record while streaming, and the recording of 80Mbps high-definition video can last 100 hours.

Audio and video can be imported and used simply by inserting a USB disk.

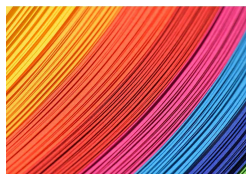
- USB 3.0
- Record and play
- One-click import



Pro Color Rendering and Layers

One-Click Chroma Key

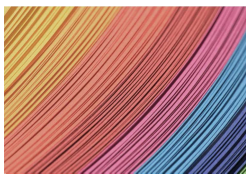
Enable presenters to be in virtual studios and environments with Chroma Key. Select from standard key colours and enable Chroma Key directly on mini-mx without the need for an app. Refine colour selection and tolerances from the touch screen to optimise.



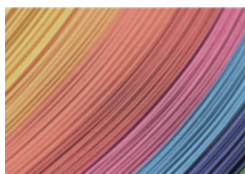
Original image



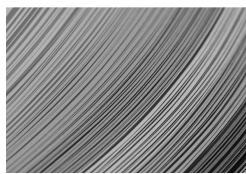
YUV444



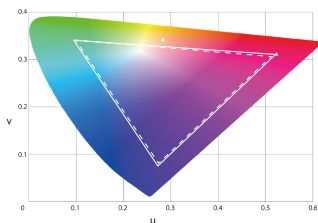
YUV422



YUV420



Y (Luma)



— HDTV(Rec 709)gamut
--- HDTV(Rec 601)gamut

Full Color Matrix

Lossless sampling rate at YUV4:4:4, and the Color Space Conversion Technology perfectly realizes the conversion of CCIR601 and CCIR709 to RGB color space, avoiding color distortion caused by color deviation.

Connections

Input	HDMI 4K	4 × HDMI-A
	3G SDI	4 × SDI
	NDI	1 × NDI
Output	HDMI 2K	2 × HDMI-A
	USB (Record)	1 × USB-C
	USB (Stream)	1 × USB-C
	NDI	1 × NDI
Audio	MIC IN 1	1 × 6.35mm XLR + TS Jack (48V Phantom Power)
	MIC IN 2	1 × 6.35mm XLR + TS Jack
	LINE IN	1 × 6.35mm TRS Jack
	OUT	1 × 6.35mm TRS Jack
		1 × 3.5mm mini-Jack
Communication	LAN	1 × RJ45
Power	Power Supply	1 × USB-C

Control

Remove Control	TAO Cloud、webAPP
Firmware Update	TAO Cloud

Operational Environment

Temperature	0° to 60° C
Humidity	10-85% RH

Physical Specifications

Weight	Device	0.60 kg
	Packaged	1.38 kg
Dimensions	Device	280×223×64mm (11.0×8.8×2.5in)
	Packaged	332×238.5×109mm (13.1×9.4×4.3in)

In the Box

mini-edge SDI	1
PD power adapter	1
USB-C data cable	1
Quick guide	1

Order Codes

230-0009-01-0	mini-mx SDI
---------------	-------------

Performance

Input Resolutions	HDMI 2.0 SMPTE 720p@50/60 1080i@50/60 1080p@24/30/50/60
	VESA 1024×768p@60 1280×720p@60 1280×768p@60 1280×800p@60 1280×1024p@60 1360×768p@60 1366×768p@60 1440×900p@60 1600×1200p@60 1680×1050p@60 1920×1080p@60
	SDI 720p@50/60 1080i@50/59.94/60 1080p@23.98/24/25/29.97/30/50/ 59.94/60
Output Resolutions	HDMI/USB (Webcam) 1280 × 720@50/60 1920 × 1080@24/25/30/50/60
Supported Standards	HDMI 2.0 HDCP 2.2 SDI (3G/HD/SD) USB 3.0 USB 2.0 NDI HX2 H.265(ITU-T H.265/ ISO/IEC 23008-2)
Color Space	RGB 8bit YCbCr 4:4:4 8bit YCbCr 4:2:2 8bit
Video Latency	<4 frames
Audio Format	PCM/2ch/24bit/48kHZ
Sampling Rate	48K
Bitrate	24bit
Record Formats	MP4 (up to 16Mbps)
Disk Formats	FAT32 exFAT
USB Power Delivery	UVC 3.0
Supported Cables	Certified USB PD Aware
Input Voltage	PD 12V/3.3A
Input Voltage	40W