



RGBlink®

miniEDGE

5 channel All-in-One Switcher

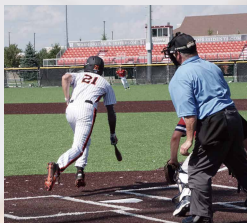


mini-edge is a controllable live broadcast recording and directing station with 5 video inputs, 8 audio inputs and multiple output interfaces supporting multi-layer and mixing control.

It is not only suitable for multi - platform live broadcasts and remote audio - video conferencing, but can also be used for various live events such as stages, educational settings, press conferences, and sports games. It provides high - quality functions and has excellent cost - performance.



Education



Sport



Worship



Event



Conference

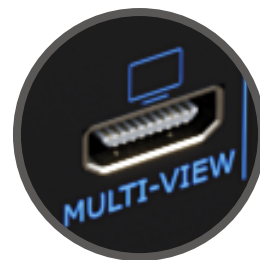


Full-Featured Keyboard Controls at a Glance

The onboard 5.5-inch HD full-color screen monitors all input channels and output images in real time. Full-featured keyboard, fast control of any function.

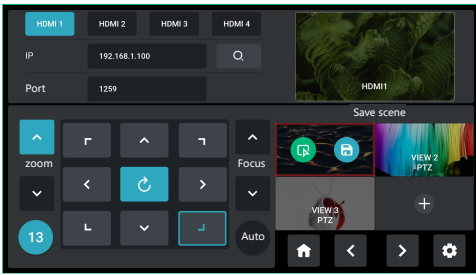


Configurable HDMI Output for live presentations



HDMI PVW port – configure for multi-view or AUX each input

Take Full Control



Integrated PTZ Camera Control

Forget about having multiple separate control panels for video and camera control. mini-edge brings it all together, supporting industry standard VISCA protocol for PTZ control directly from the mixer. Control up to four separate cameras with pan, tilt, zoom and focus.



Precise Fingertip Control

Integrated joystick provides tactile control for each PTZ camera. Together with the toggle on the front panel, they can control the pan, tilt, zoom and focus of the PTZ camera. Joystick and toggle are additionally dynamically assigned to settings including scale, position and crop for enhanced usability when a layer being controlled.

Pro Color Rendering and Layers

One-Click Chroma Key

Enable presenters to be in virtual studios and environments with Chroma Key.

Select from standard key colours and enable Chroma Key directly on mini-edge without the need for an app. Refine colour selection and tolerances from the screen to optimise.

* The device supports keying green and blue colors and the web-side supports keying 6 colors in total.



Pro Level Audio

Capture Every Sound

With two separate insert audio ports, mini-edge has got external balanced mic and line level audio covered. All two ports accept TRS 1/4in jacks, with MIC supporting direct XLR connection too. Plus there is 48V phantom power directly from mini-edge available too on MIC, negating the need for a separate DI, and instantly making studio mics native connections as they should be.



Follow the Action & Always be In Sync

Set AFV for any HDMI embedded audio so the audio switches with the video source to PVW and PGM automatically.

Configure audio delay for MIC inputs or a camera input to keep audio in sync with the video.



Monitor & Set Live

The professional audio console with dynamic button operation is both eye-catching and convenient. It provides precise control, allowing for easy volume adjustment and enabling one-key mute and monitoring, which brings the user an excellent live-streaming experience.

⌘ Bluetooth audio input supports.



Pro Level Video

Sophisticated Multi-Layer Presentation

Assemble visuals with multiple layers of video and graphics. mini-edge offers 2 full video layers plus background image, two graphic overlays from the media pool as well.

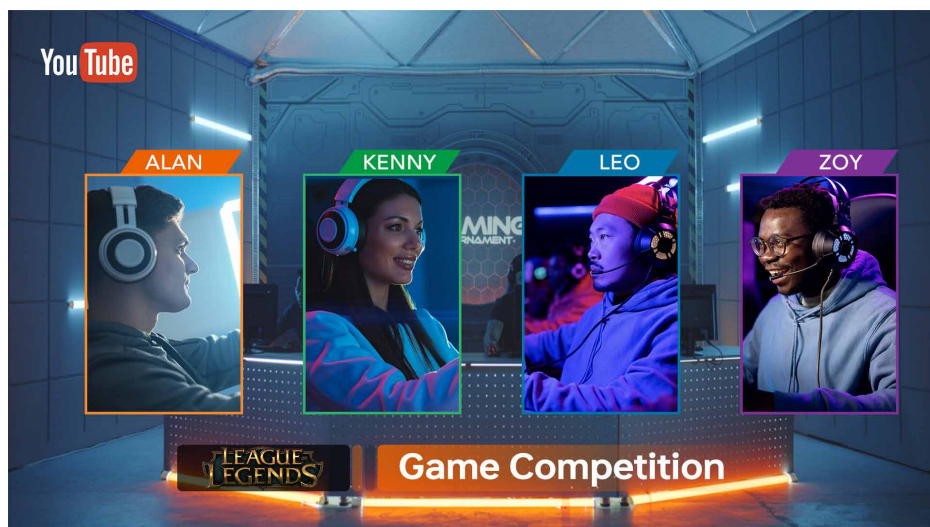


Dynamically Scalable

Each of the two assignable video layers maybe scaled, positioned and cropped with these placed over the background.

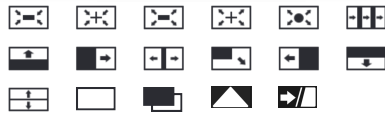
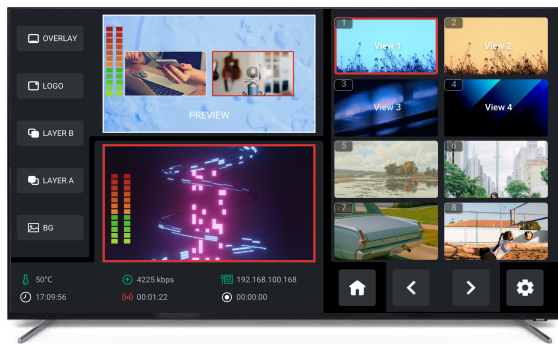
Multiple Layer Sophistication

Besides dual video sources, also add media pool graphic overlays for lower -thirds and branding logos, and switch seamlessly between graphic elements.



Fluid Interactive Operation

Select any source or preset with control panel thumbnails and iconography that makes mini-edge a natural and intuitive way to present and stream.



Transition Like a Pro

mini-edge includes multiple DVE transition effects from preset to program, adding sophistication and effect.

Leverage the Power of Presets

mini-edge supports saving and quick recall of 16 preset scenes, including graphics, audio, and even the parameters of the PTZ position and focus enabling smooth transitions between scenes.



Go Remote

mini-edge web app companion apps for laptop and mobile allow remote use from the mini-edge and the video connections.

Fully integrated with the RGBlink TAO cloud control streams remote too with TAO cloud.

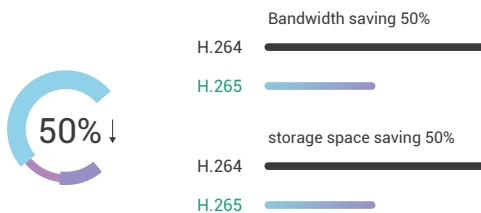


Pro Streaming

Enhanced Streaming

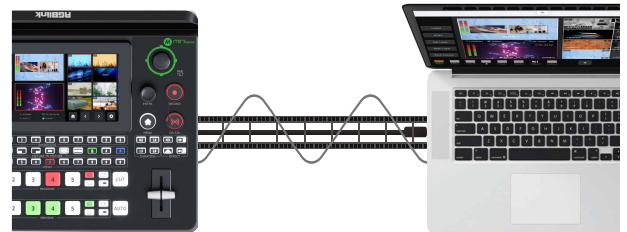
H.265

Take advantage of advanced H.265 compression and encoding for higher performance streams.



live stream

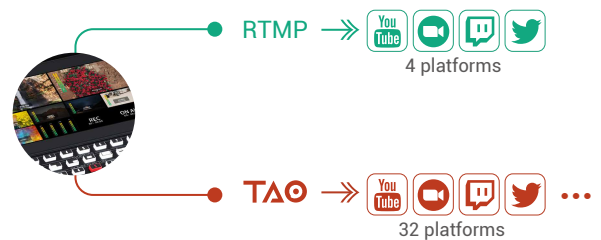
Verticarafre and vae etceaof ad sappedtec26g co is cosspatible avith multiple mobile live-streaming platforms



Capture & Share

Connect mini-edge to a laptop for instant recognition as a webcam to enable capture for apps such as OBS and more of others.

Share your presentation on Teams, Zoom™ or any collaboration platform.



RTMP(S)

Stream up to four multiple platforms simultaneously directly over IP without a laptop. And with TAO cloud integrated directly into mini-mx, cloud-stream up to 32 platforms or connections at the same time.

Recording

The USB 3.0 recording output interface can be directly connected to a hard drive with a maximum capacity of 2T.

It can simultaneously record while streaming, and the recording of 160Mbps high-definition video can last 100 hours.

Audio and video can be imported and used simply by inserting a USB disk.



Connections

Video Inputs	HDMI 4K UVC	4 x HDMI-A (4 x 4K60) 1xUSB-C
Video Output	PGM PVW/AUX	1 x HDMI-A (1 x 2K60) 1 x HDMI-A (1 x 2K60)
UVC/Webcam Stream Output		1 x USB-C
Recording Output		1 x USB-C
Audio In	MIC LINE	1 x XLR/6.35mm TRS Jack 1 x 6.35mm TRS Jack
Audio Out	LINE H/PHONES	1 x 6.35mm (¼") TRS Jack 1 x 3.5mm mini-Jack
Communication		1 x RJ45
Power		1 x USB-C

Control

Remove Control	TAO Cloud
Firmware Update	TAO Cloud

Operational Environment

Temperature	0° to 45° C (32° - 115° F)
Humidity	10-85% RH

Physical Specifications

Weight	Device Packaged	1.48kg (3.26lb) 2.80kg (6.17lb)
Dimensions	Device Packaged	280×223×64mm (11.0×8.8×2.5in) 332×238.5×109mm (13.1×9.4×4.3in)

In the Box

mini-edge	1
PD power adapter	1
OTG cable	1
USB-C data cable	2
quick guide	1

Order Codes

230-0006-08-0	mini-edge
---------------	-----------

Performance

Input Convertors	Independently on each of 4 inputs
Input Resync	On all 4 HDMI 2.0 inputs
Input Resolutions	SMPTE 720p50, 720p60, 1080i50*, 1080p23.98, 1080p24.97, 1080p50, 1080p59.94, 1080p60 VESA 1024x768@60, 1280x720@60, 1280x768@60, 1280x800@60, 1280x1024@60, 1360x768@60, 1366x768@60, 1440x900@60, 1600x1200@60, 1680x1050@60, 1920x1080@60, 1920x1200@60, 3840x2160@60*, 4096x2160@60*
Output Resolutions	SMPTE 720p50, 720p60, 1080p23.98, 1080p24.97, 1080p50, 1080p59.94, 1080p60 VESA 1024x768@60, 1280x720@60, 1280x768@60, 1280x1024@60, 1360x768@60, 1920x1080@60
Supported Standards	HDMI 2.0, HDCP 2.2 ITU-T H.265, RTMP/RTMPS ISO/IEC 23008-2 3.0 VISCA OVER IP FAT32, exFAT MP4 10/100/1000BaseT
Video Sampling	4:4:4 YUV
Grayscale Processing	10bit
Color Space	Rec 709 (RGB)
Colorspace Conversion	Realtime in Hardware
Latency	<4 frames
Audio In Delay	Up to 8 frames
Mic Plug In Power	+48VDC Phantom Power (MIC1 Switchable)
Line Audio Input	Balanced Stereo
Upstream/Chroma Keyers	1
Downstream Keyers	2
Output Layers	
Total	5
Video	2
Background	1 (JPG/PNG)
Still/LOGO	2 (JPG/PNG)
Hot Media Pool Sources	2
Direct/IP Streaming	
Format	RTMP/RTMPS
Connectivity	Ethernet, USB-C shared mobile connection
Streams	2 platforms simultaneously