



The first **8K-class**
video processor



RGBlink®



The first 8K-class video processor

The D series has always been regarded as the leader in presentation-level image quality processing at different display stages in the industry. D8 continues to lead the display technology to become the first 8K@60-level video processor in the industry. Create a visual experience.

The D8 input supports 1 HDMI 2.1 interface, and can be equipped with 1 8K-level DP 1.4 and TYPE-C input, which can meet the switching between different 8K input transmissions and 2 8K signals on site.

The D8 is equipped with a 4-inch LCD touch screen, which optimizes the overall front panel aesthetic design and optimizes the user experience. No connection is required. The front panel is controlled by touch, and the touch control is used to switch modes, and view the input and output status in real time.

D8 adopts a new design method, built-in 4-inch LCD touch screen, touch to view the monitoring input and output status. Through the HDMI output expansion on the real front panel and support for USB connection keyboard and mouse control, it is completely separated from the computer to achieve timely control and meet the various control needs of users.



Support 8K@60 signal input, compatible with HDCP 2.X



Built-in 4-inch LCD touch screen preview display



Support USB keyboard and mouse control



Optional 1 channel 8K input DP 1.4/TYPE-C input



Support 8K EDID management



Support multiple cascade control



Support XPOSE Web Server control



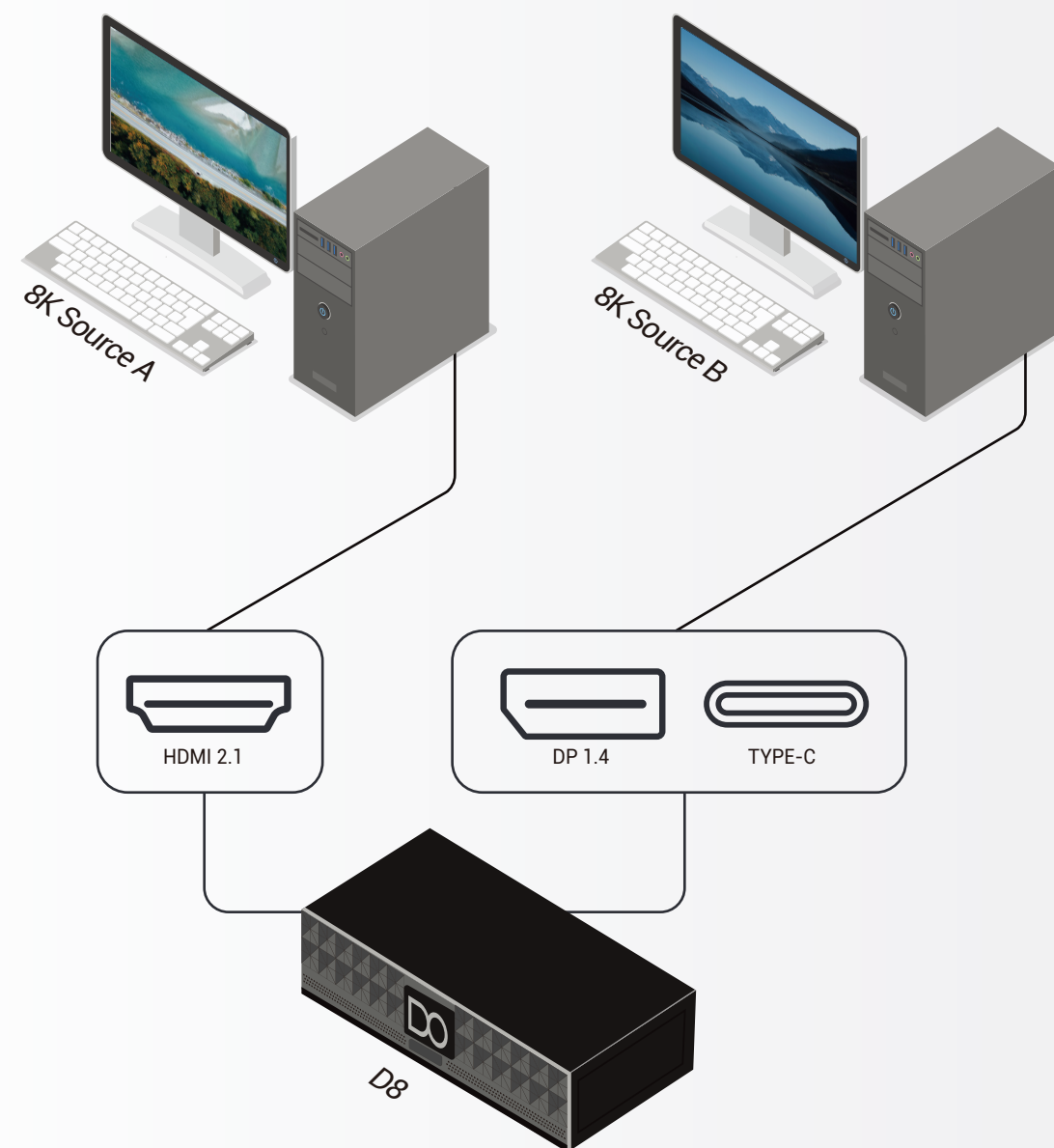
Support all interfaces hot swap



Support Open API

8K input

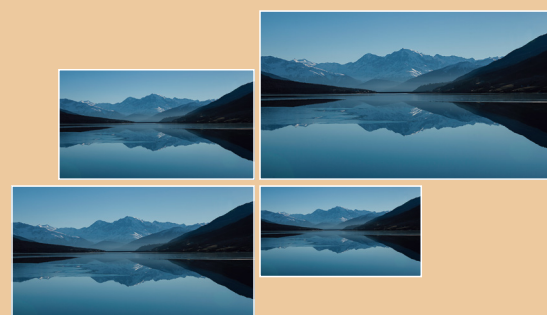
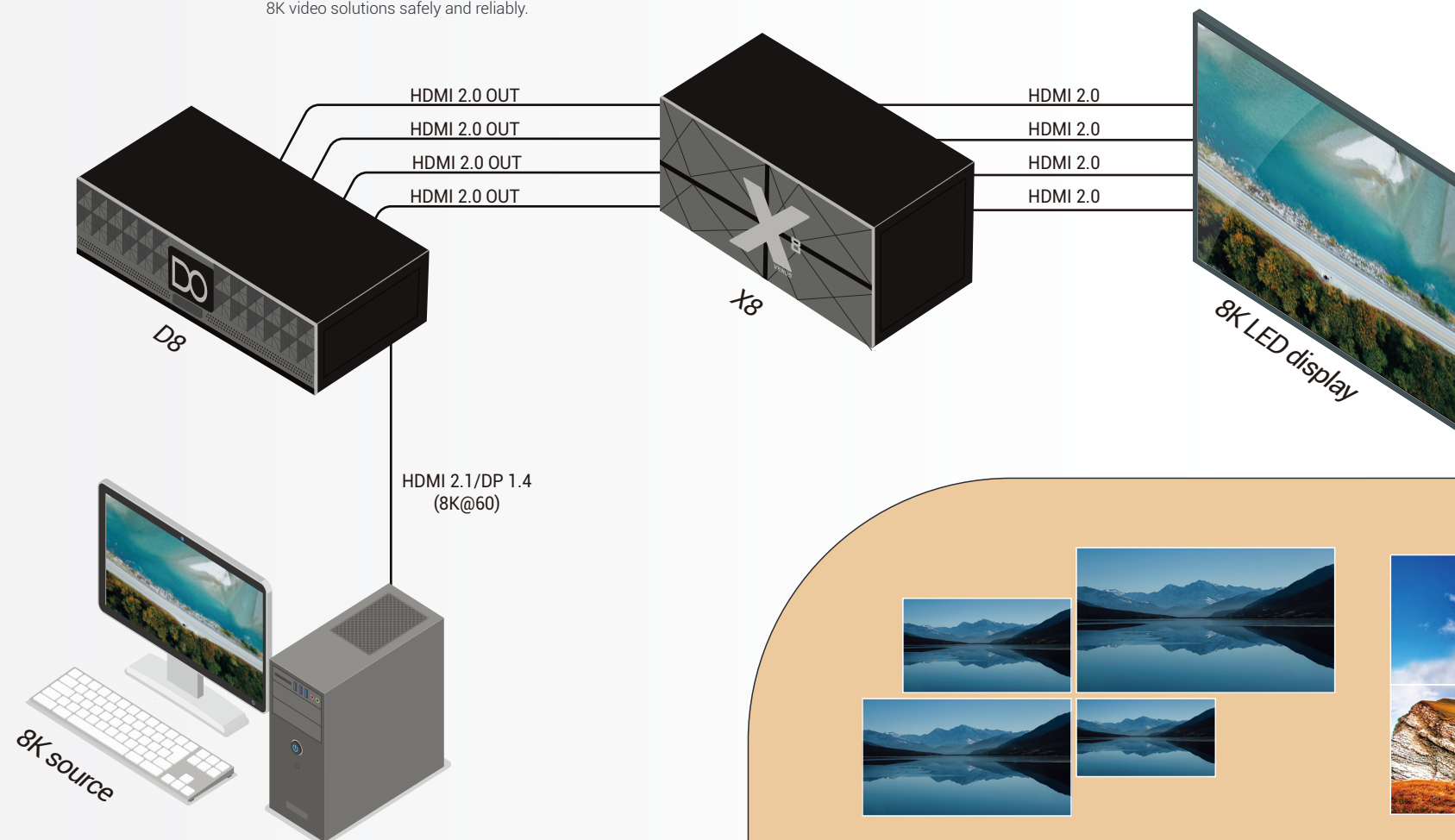
The new 8K architecture design supports HDMI 2.1, DP 1.4, and Type-C different interfaces to truly realize the input of 8K signals. By selecting any one channel of 8K input, two channels of 8K content transmission and signal switching can be realized.



* Standard one HDMI 2.1, optional one (DP 1.4/TYPE-C), to achieve two 8K

8K processing

D8 supports 4-channel HDMI2.0 4K@60 output, completes 8K content display and transmission, and realizes 8K video solutions safely and reliably.



Same physical size as 4K screen



Standard 8K stitching



Unequal 8K stitching

Custom Display and Stitching

The output can be independently and arbitrarily zoomed and controlled, so that it can easily cope with the splicing of different sizes of displays and any split screen on site. It can also realize 4-way HDMI 2.0 duplication output. If the resolution of 4 displays on site is different and the same content output is displayed independently, D8 can satisfy it.

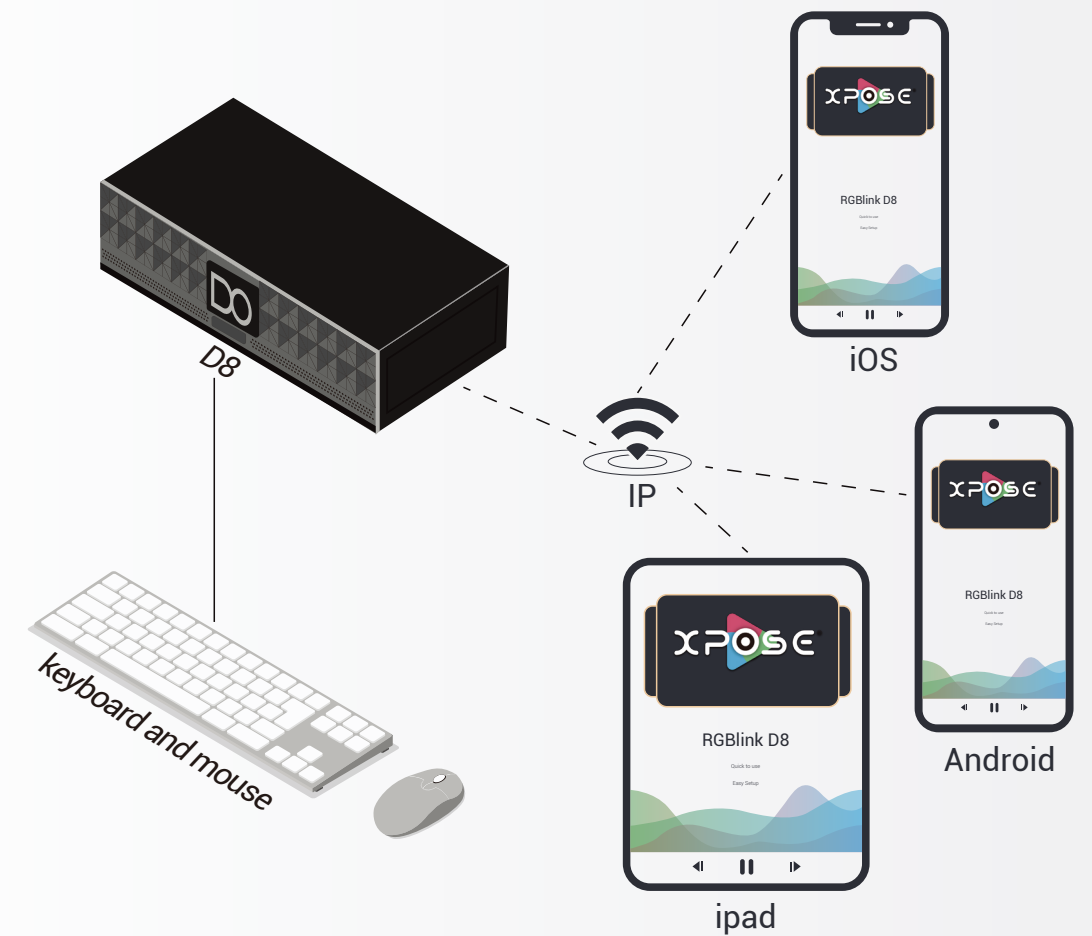
Genlock synchronization

Genlock frame synchronization is used to ensure seamless transmission of each pixel splicing, and content and large-screen display timing can be realized in multi-screen and multi-video processing solutions. No tearing of the picture, synchronous display of afterimages.



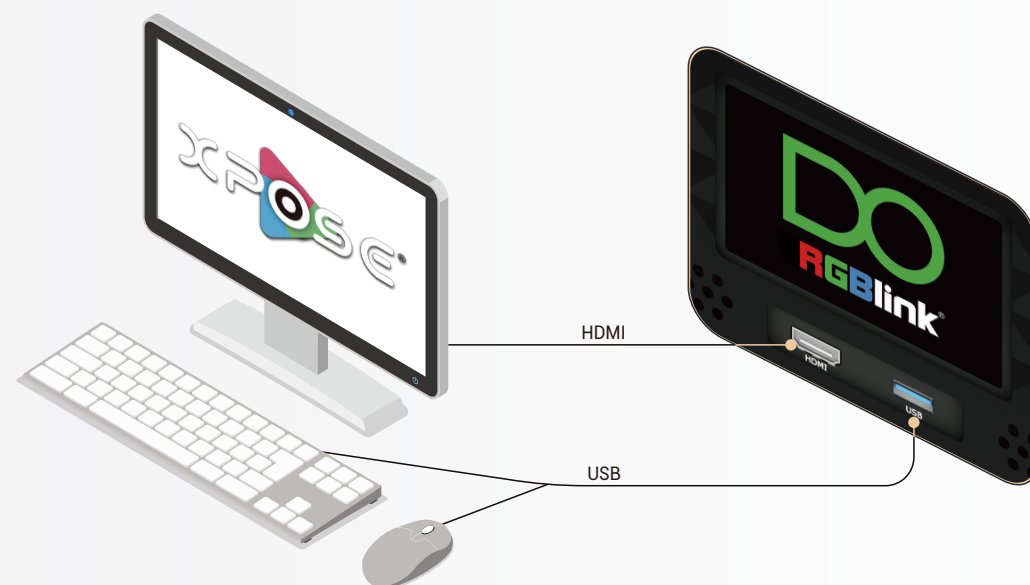
multi-platform control

D8 is mainly controlled by R&D XPOSE software, but in addition, D8 also supports Android, Apple mobile phone, tablet control, and also based on IP-controlled Webserver. In addition, D8 also provides open API files for customers to use third-party equipment, which truly meets different customer site control needs.



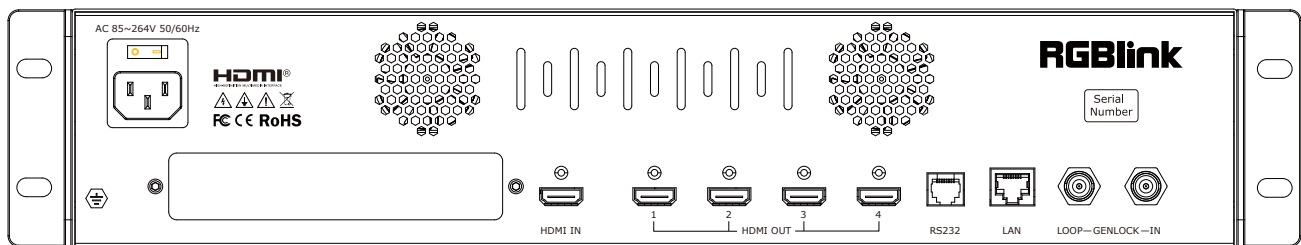
USB mouse and keyboard control

Adopting a new design method, the front panel supports USB connection for keyboard and mouse control, and the front panel HDMI expansion output display, which improves the user's freedom of control and selection. It can be separated from the computer to achieve real-time control, which greatly reduces the burden of the on-site console.



4 inch LCD touch screen

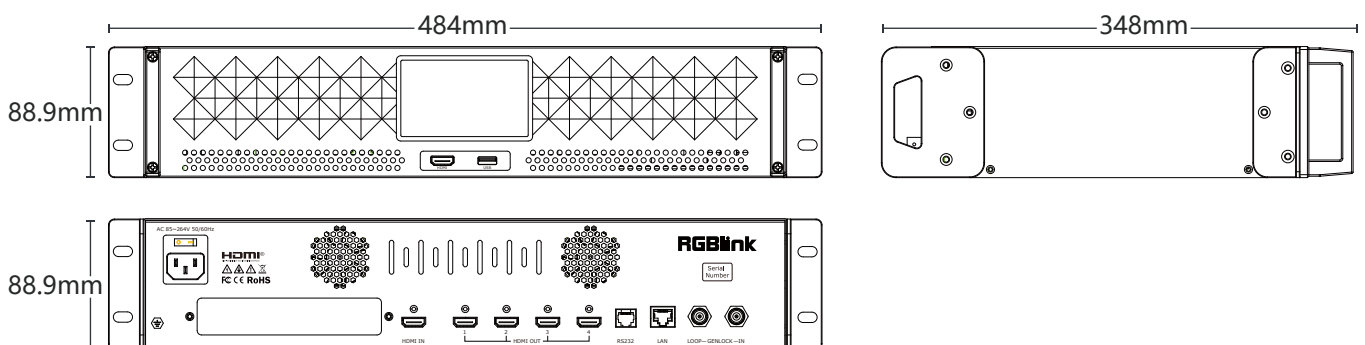
The built-in 4-inch LCD touch screen optimizes the overall front panel aesthetic design and optimizes the user experience. You can directly control and select switching modes through the front panel touch. The front panel can also check the input and output status in real time without using an external display screen to ensure display security.



Specification

Connctetors	Input	2 slots,support 2 input		
		Standard	HDMI 2.1	1×HDMI-A
		Select from	DP 1.4 (To be released)	1×DP
			TYPE-C (To be released)	1×USB-C
	Output	Standard	HDMI 2.0	4×HDMI-A
	Control	Standard	USB	1×USB-A
			HDMI	1×HDMI-A
	Communication	Standard	Genlock In / Loop	2×BNC
			LAN	1×RJ45
RS232			1×RJ11	
Power	1×DC Jack			
Performance	Input Resolutions	Select from below or configure customized		
		HDMI 2.1		
		SMPTE	720p@50/60 1080p@30/50/60 2160p@30/60 4320p@30/60	
		VESA	1024×768@60 1280×720@60 1280×768@60 1280×800@60 1280×1024@60 1360×768@60 1440×900@60 1920×1200@60 3840×570@60 2560×1600@60/120 3840×2160@30/60 3840×2400@60 4096×2160@60 7680×4320@60	
		DP 1.4		
		SMPTE	720p@50/60 1080p@30/50/60 2160p@30/60 4320p@30/60	
		VESA	1024×768@60 1280×720@60 1280×768@60 1280×800@60 1280×1024@60 1360×768@60 1440×900@60 1920×1200@60 3840×570@60 2560×1600@60/120 3840×2160@30/60 3840×2400@60 4096×2160@60 7680×4320@60	
		TYPE-C		
		SMPTE	720p@25/30/50/60 1080p@30/50/60 2160p@30/60	
		VESA	1280×720@30/50/60 1280×768@60 1920×1080@25/30/50/60 3840×2160@30/60	
	Output Resolution	Select from below or configure customized		
		HDMI 2.0		
		SMPTE	720p@50/60 1080p@30/50/60 2160p@30/60	
		VESA	1024×768@60 1280×720@60 1280×768@60 1280×800@60 1280×1024@60 1360×768@60 1440×900@60 1920×1200@60 3840×570@60 2560×1600@60/120 3840×2160@30/60	
	Supported Standard	HDMI	2.1	
		DP	1.4	
TYPE-C		3.2		
Power	Input Voltage	AC 100V-240V, 50/60Hz		
Environment	Temperature	0°C ~ 70°C		
	Humidity	15% ~ 85%		
Physical	Device Weight	7.2kg		
	Packaged Weight	8.5kg		
	Device Dimension	484mm×480mm×88.9mm		
	Packaged Dimension	530mm×530mm×130mm		

Dimension



Order Codes

Product Code	Item
130-0008-01-0	D8

HDMI® HDCP™

Proudly designed and manufactured in Xiamen Hi Technology Zone, China
 WEB: www.rgblink.com EMAIL: sales@rgblink.com PHONE: +86 592 5771197

RGBlink®



www.rgblink.com