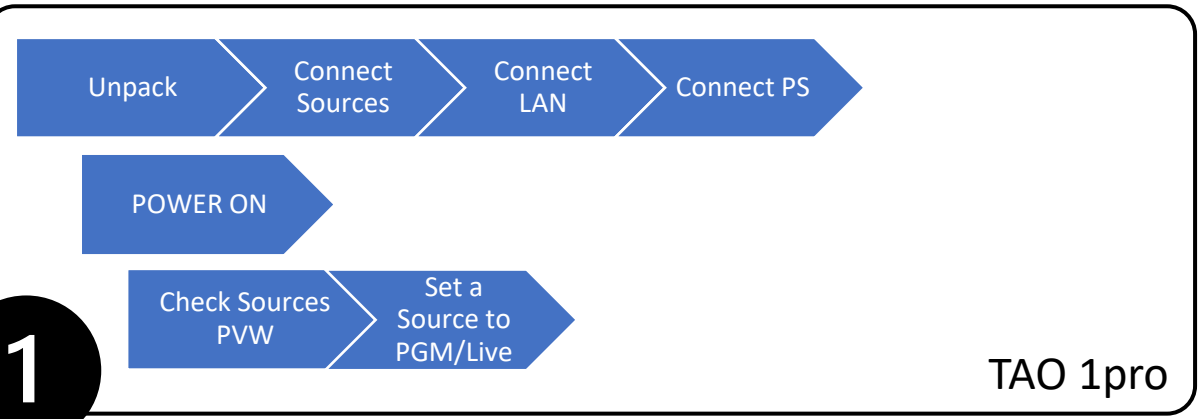


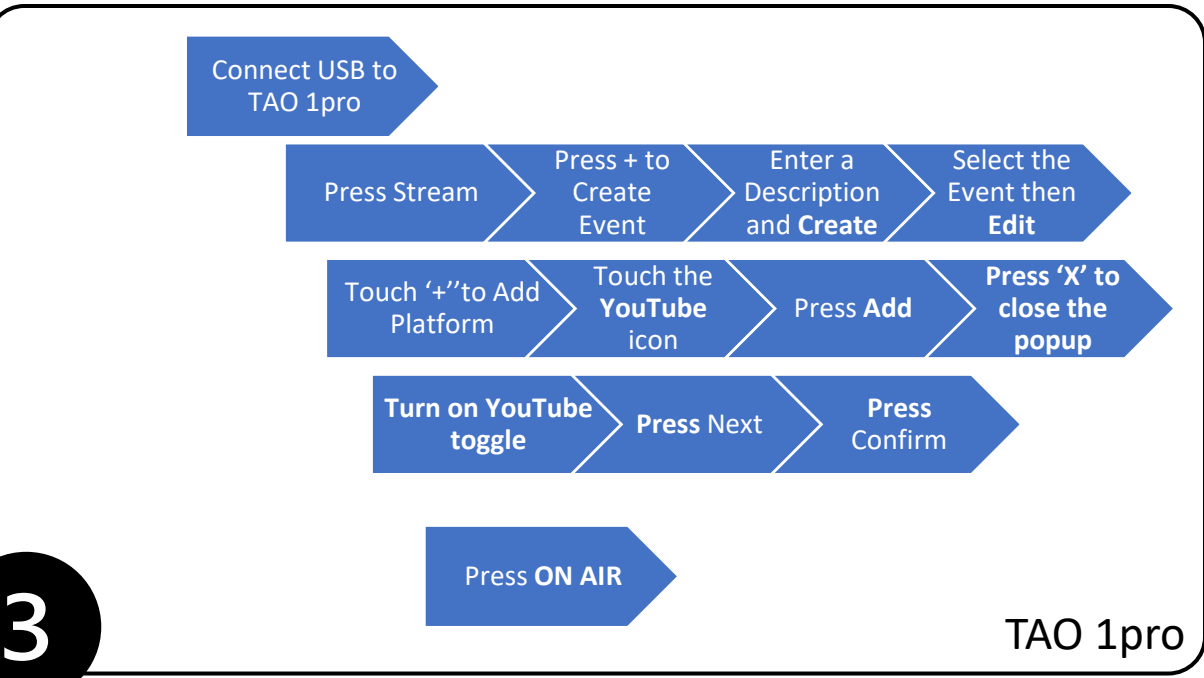


Stream to YouTube

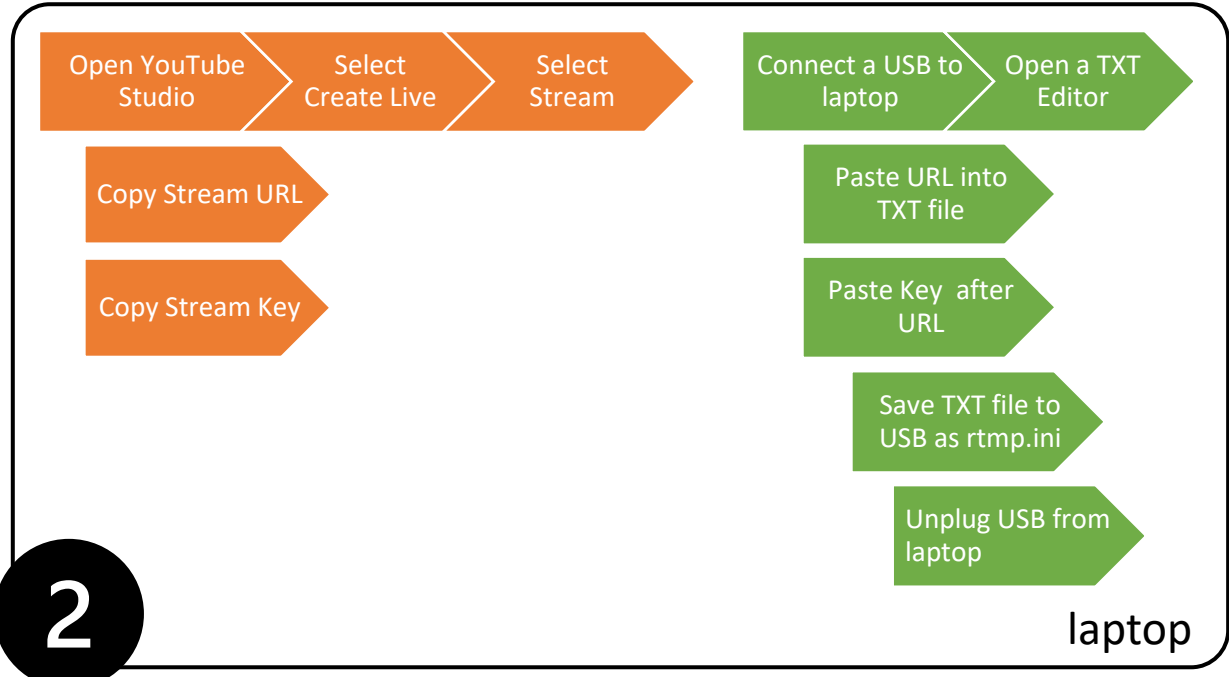
1



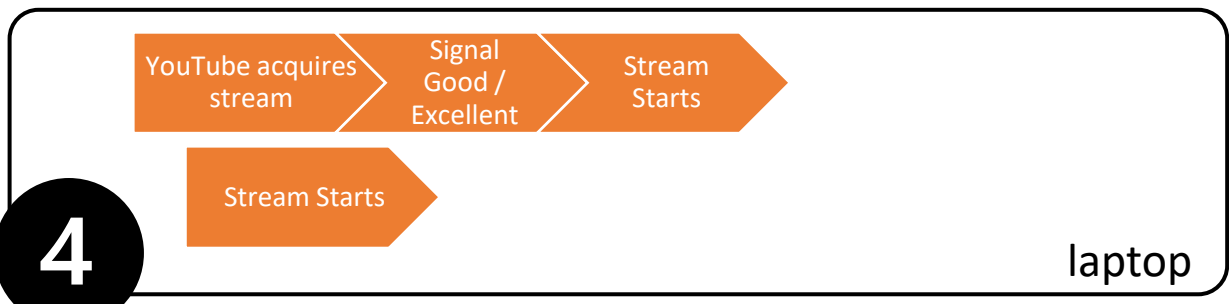
3



2



4



More Information

Source Status: No Source Ready In PVW Live PGM

1 Unpack, Connect, Power Up & Preview

IMPORTANT: When using HDMI connect before Power On. Hot-plugged HDMI sources may not be detected

Preview Sources

Test your sources by previewing each input source on screen.



- Default view shows the selected signal full screen



- Touch the screen to reveal the UI controls



- Touch the source HDMI or UVC label at top left to see all sources and their status.
- Touch a source with a green button to PVW that source. Button will flash yellow.
- Touch again, button will become red, switching this source be the PGM live output. If there is an HDMI monitor connected, this source will display on the monitor.

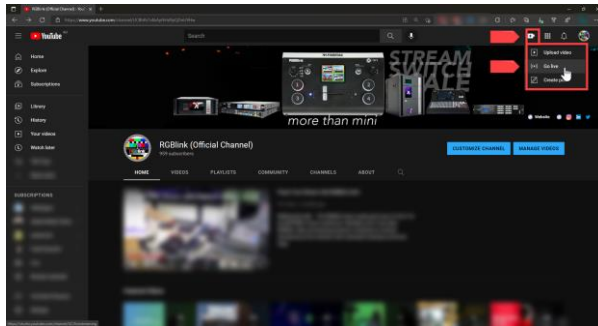
More Information

2

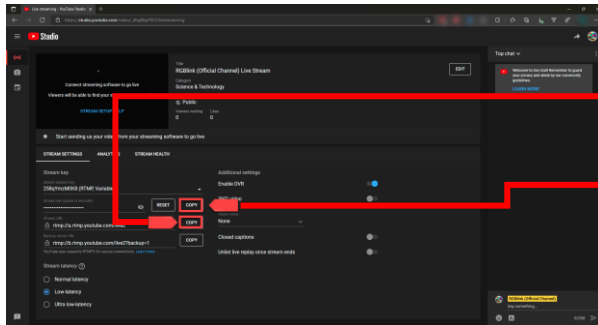
Set up a Platform Profile

Get a USB stick and a laptop to get your information from YouTube to then create a file to load TAO 1pro as your streaming **platform** profile.

Open YouTube



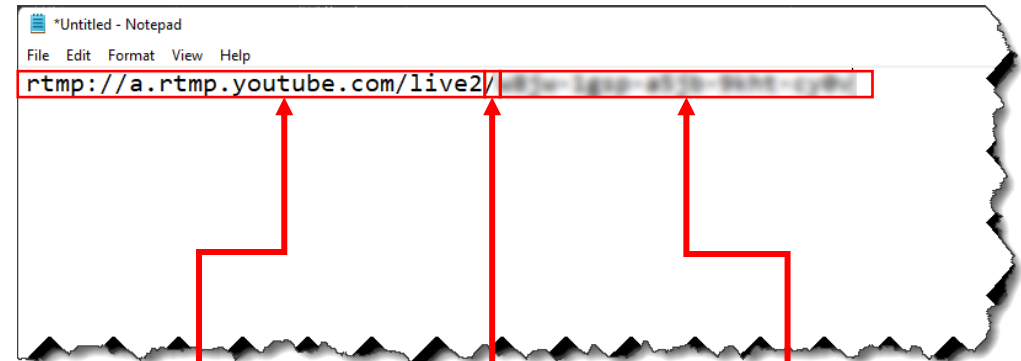
Select **Go Live**



Copy Stream URL

Copy Stream Key

Open Notepad or your favourite TXT editor



Paste Stream URL

Type '/'

Paste Stream Key

Save file to USB stick as rtmp.ini

More Information

3

Set up an Event and Add Platform Profile

*Connect **USB stick** with **rtmp.ini** file from the previous step to the **RECORD** USB port on **TAO 1pro** In this step you will create an event and add the platform profile to the event and be ready to go **ON AIR**. An **Event** allows a group of **Platform** settings to be saved and recalled.*

Create an Event



- Touch the **Stream Event** button



- **Add** an Event Setting



- Touch and type in a name for your Event.
- Press **Enter** to confirm
- Press **Create**

More Information

3

Set up an Event and Add Platform Profile

*Connect **USB stick** with **rtmp.ini** file from the previous step to the **RECORD** USB port on **TAO 1pro** In this step you will create an event and add the platform profile to the event and be ready to go **ON AIR**. An **Event** allows a group of **Platform** settings to be saved and recalled.*

Add Platform Profile



- Select the event icon
- Press **Edit**



- Touch **+** to add a streaming platform to the event



- Touch the YouTube icon to select
- Press Add to confirm
- Press 'x' to close pop-up

More Information

3

Set up an Event and Add Platform Profile

*Connect **USB stick** with **rtmp.ini** file from the previous step to the **RECORD** USB port on TAO 1pro In this step you will create an event and add the platform profile to the event and be ready to go **ON AIR**. An **Event** allows a group of **Platform** settings to be saved and recalled.*

Prepare to Start Streaming



- Turn on the platform using the toggle control
- Press **Next**



- Press **Confirm**



- Press **ON AIR** to start streaming