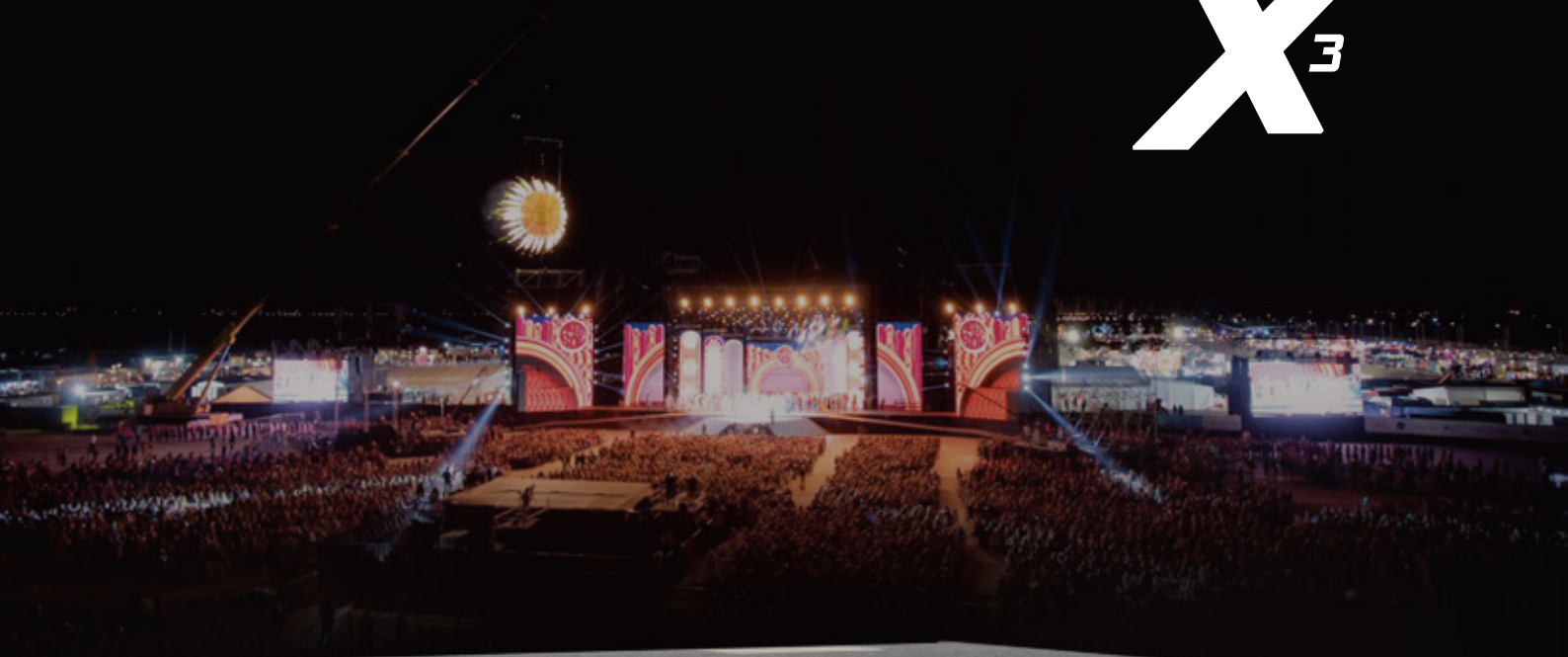


X₃



**Universal video wall processor
for performance**

RGBlink®



High performance video wall processing

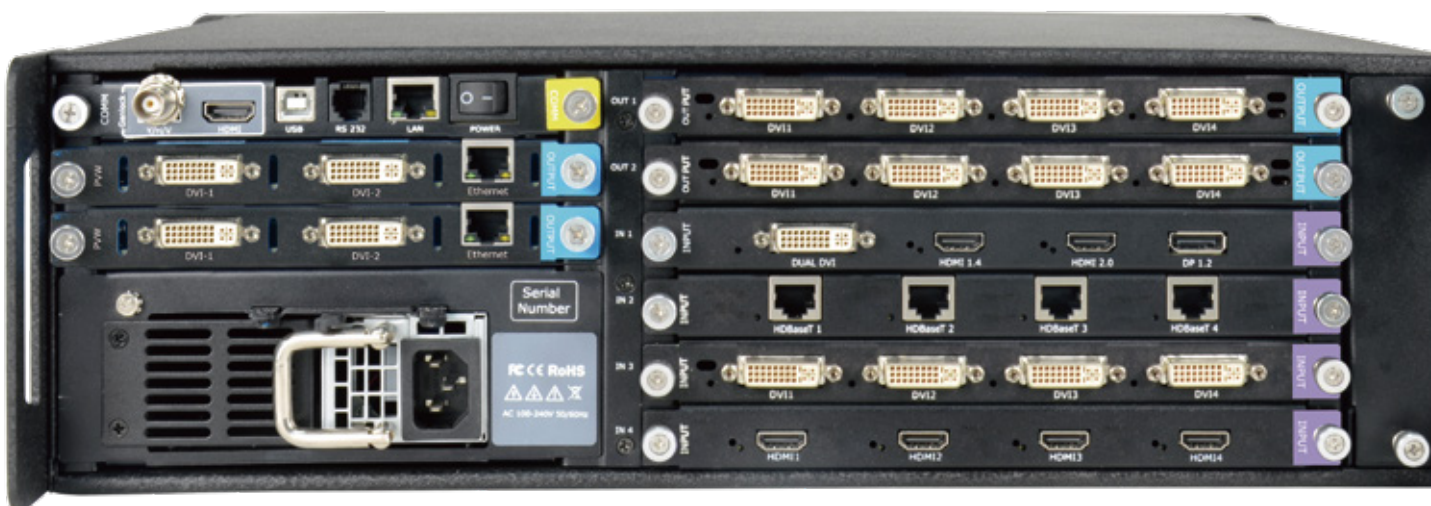
X3 universal processors are 16x8 scalable videowall control solutions that are dynamically configurable to meet the demands of high-resolution modern displays. The high performance 12bit 4:4:4 processing engine delivers video scaled pixel-to-pixel to multiple outputs that are seamlessly spliced and fully synchronised. A dedicated, high-speed video/graphic bus maintains real-time performance even regardless of the signal load or type.

Inputs and outputs are entirely modular, arranged in slots, upto sixteen inputs and up to eight outputs may be fitted. RGBlink SmartSlot modules for input include 4K@60 Digital (HDMI 2.0 & DisplayPort 1.2), 12G-SDI, a wide range of 2K module options, as well as inputs for H.264 and USB Media.

While X3 is ideal for videowall continuous display environments, the processor is truly multi-functional with operation modes including Videowall, Presentation, Matrix, 3D and more.

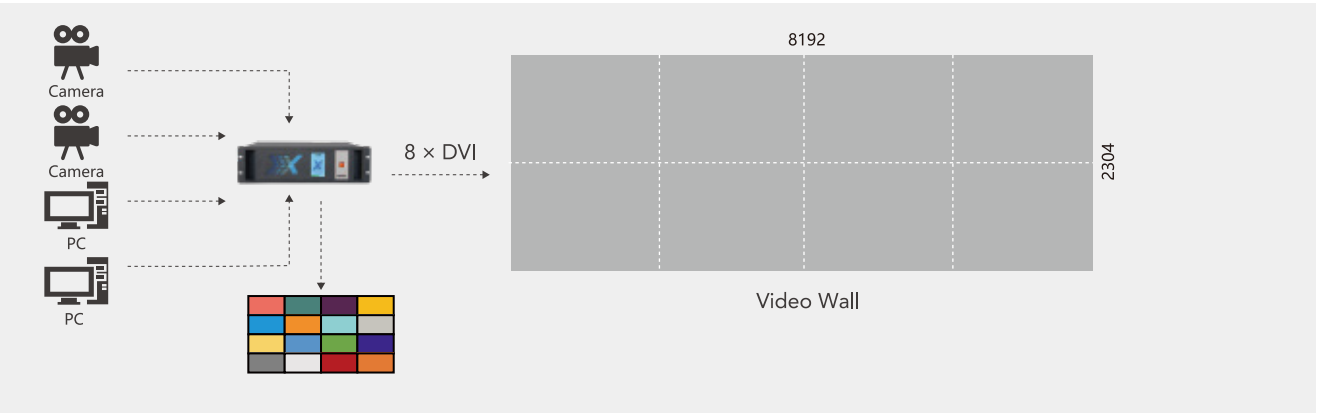
Features

- Fully modular design
- Wide range of input signal options
- Fit up to two 4K@60 outputs
- Fit up to 8 2K ARO advanced rotation outputs
- 18 mega pixel capacity
- Multiple operation modes
- LOGO Capture, DSK and OSD on board
- Genlock In & Digital Reference support
- Support for redundant power supply
- Store and recall presets on board
- Save settings and presets offline
- PVW multi-viewer option

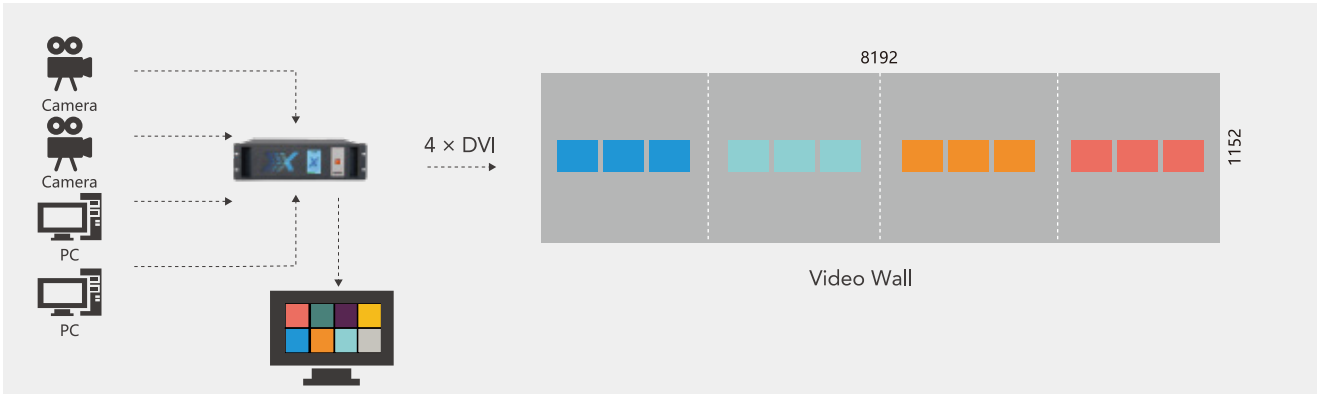


Video Wall

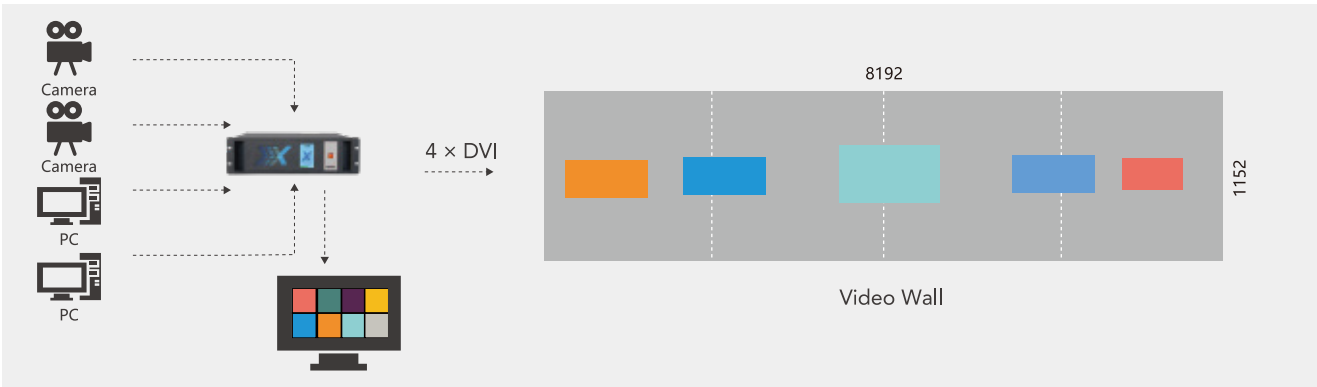
Splice outputs up to 8K x 2K resolutions. Seamlessly switch between presets.



Example: Two Quad 2K DVI modules fitted to X3 with output pixel space arranged as a single continuous display.



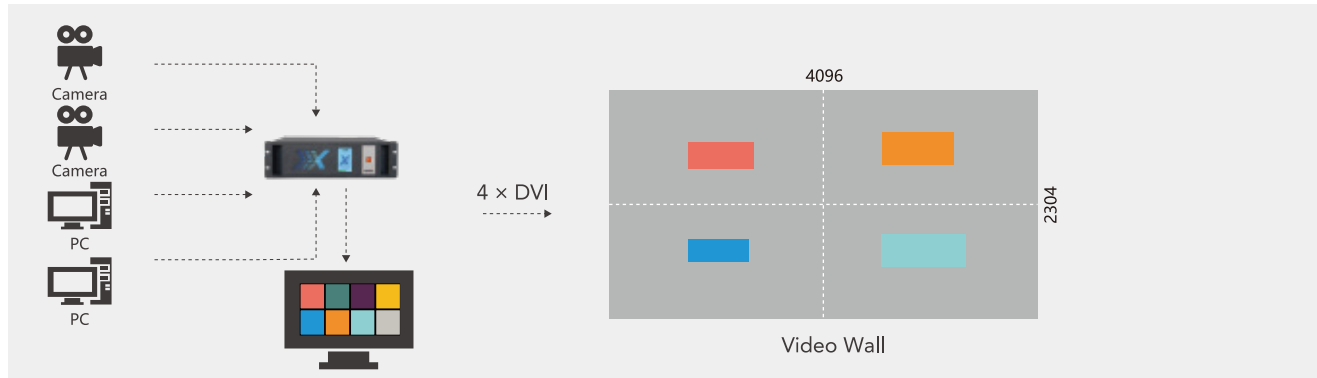
Example: Two Quad 2K DVI modules fitted to X3 with output to four 2K displays. Multiple layers/ windows applied over the background video.



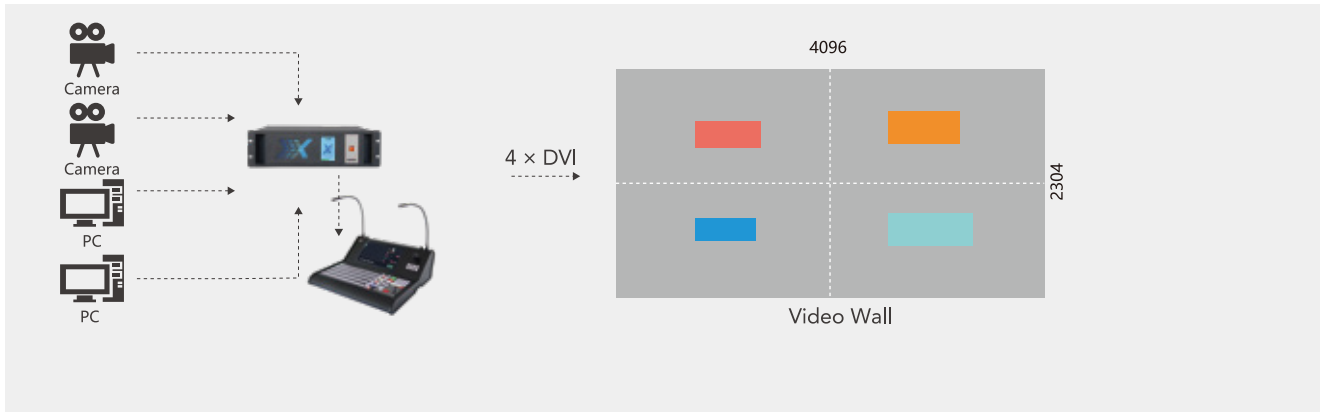
Example: Two Quad 2K DVI modules fitted to X3 with output to four 2K displays. Multiple layers/ windows applied over the background video and across spliced outputs.

Preview/Presentation

Set X3 in Preview mode with 4 outputs configured for full PST monitoring and seamless switching to 4 another 4 outputs configured for live PGM.



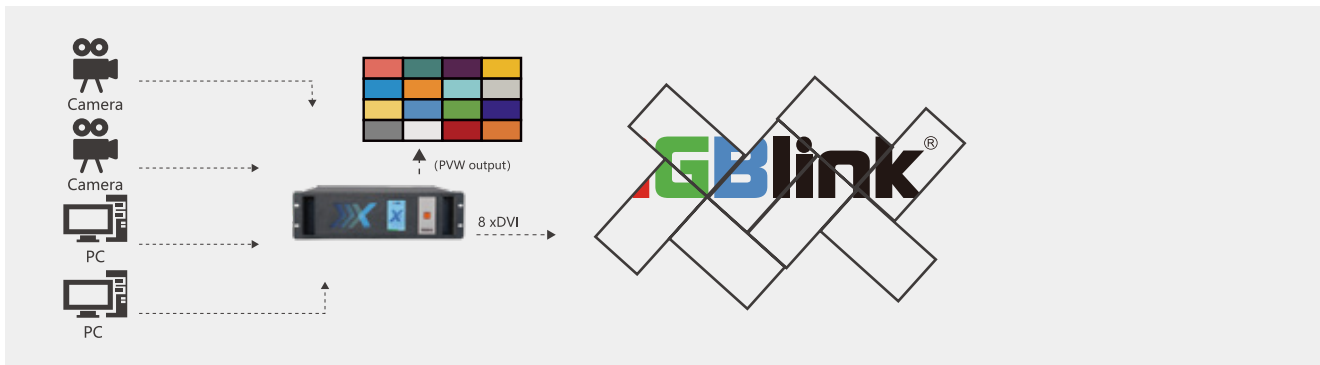
Example: Use XPOSE to control X3, preview Presets (PST) from the software, switch/TAKE on demand to PGM



Example: Use T1 to control X3, preview Presets (PST) from the software, switch/TAKE on demand to PGM

ARO Rotation

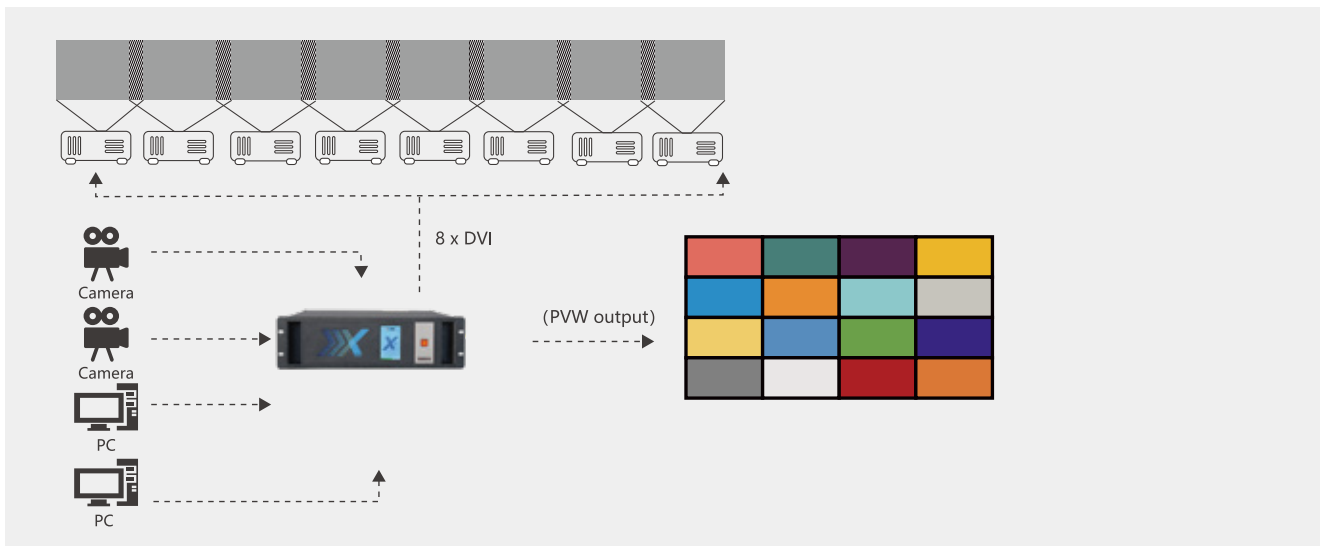
Output to creatively arranged displays with each output positioned arranged and scaled separately.



Example: X3 fitted with two ARO output modules providing 8 2K outputs with rotation configured from XPOSE.

ARO Blending

Output to projectors with variable edge blending to create large seamless display surfaces arranged in anyway.



Example: X3 fitted with two ARO output modules providing 8 2K outputs with Edge Blending configured from XPOSE.

UHD 4K 60Hz Signal Support

RGBlink 4K input and output modules may be fitted to X3. HDMI 2.0 and DisplayPort 1.2 4K@60 digital inputs and 12G-SDI may be used in both X3 and X3p models.

Preview Sources

Fit up to two PVW source preview modules to the dedicated slot on an X3p to stream video sources to XPOSE or 3rd party clients. Connect a display via DVI for a local multi-view source monitoring.



LOGO/Frame Capture

Capture a frame and store on board for recall on demand, including for use as fallback.

OSD

Overlay text in almost any font and style, with or without key. On Screen Display text is stored on board.

DSK / Chroma Key

Remove a background from a foreground layer using a preset or manually select color values.

Modular by Design

All inputs and outputs on the X3 & X3p are modular and hot swappable. Arranged in slots, each slot supporting a 4K signal or four 2K signals. A wide range of signal options available allowing native connections.

Multi-Mode Operations

X3 outputs can be configured for a range of operation modes including Matrix, Video Wall, Presentation, 3D, Rotation and Blending.

Multi-Layer | Multi-Window

Output video from multiple sources as layers or windows scaled and positioned across the output pixel space.

Configure Outputs

Set the output resolution and scale to present video pixel-to-pixel on displays of all sizes.

Rotate with Precision

In addition to 90-degree rotation and Fit ARO™ Advanced Rotation Output modules to orient video in support of physically rotated and creativity arranged displays. ARO outputs may be rotated in 1-degree increments and positioned in pixel space. Use zoom to support display of differing density.

Synchronise

Genlock and HDMI Digital Reference inputs are provided on the X3 allowing synchronisation with other devices in the system.



Remote Control

Control from RGBlink XPOSE, XPOSE mobile or T Series consoles. RGBlink OpenAPI allows X3 to be integrated and controlled from almost any system.



* X3p model shown with optional modules fitted. PVW module supported only in X3p model.

** 4K modules not supported in X3e model. Refer specification and manuals for details.

Specification

Connectors	Input	4 slots, up to 16 inputs					
		Select from	4K@60 Module	1×DVI-I 2 × HDMI-A 1 × DisplayPort		H.264 Module	4 x RJ45
			12G SDI Module	4 x BNC		HDBaseT Module	4 x RJ45
			4K@30 Module	2 x DVI-I 2x HDMI-A (1 In/1 Loop) 2x DP(1 In/1Loop)		VGA Module	4×DB15
			3G SDI Module	8 x BNC (4 In 4 Loop)		CVBS Module	8×BNC (4 In 4 backup)
			2K HDMI Module	4 x HDMI-A		USB Module	4×USB-A
		DVI Module	4 x DVI-I				
	Output	2slots, up to 8 outputs					
		Select from	3G SDI Module	4×BNC		4K HDMI Module	2 x HDMI-A
			2K HDMI Module	4×HDMI-A		H.264 Module	4×RJ 45 2×HDMI-A
DVI Module			4×DVI-I		Rotation Module	4×DVI-I	
	HDBaseT Module	4×RJ45					
PVW	2 slots						
	standard with	2 x PVW Mdoule	2×DVI I 1×RJ 45 (Each Module) X3p only				
Communication		LAN	1 x RJ 45				
		RS 232	1 x RJ 11				
		USB	1 x USB-B				
		Genlock/Syn	1x BNC 1 x HDMI-A				
Power	2 slots	Up to 2 power Inputs	1 x IEC (each PSU)				
Performance	Input Resolutions	SDI					
		SMPTE	720p@50/59.94/60 1080p@23.98/24/25/29.97/30/50/59.94/60 2160p@23.98/24/25/29.97/30/50/59.94/60				
		HDMI DP					
		SMPTE	720p@23.98/24/25/29.97/30/50/59.94/60 1080p@50/59.94/60 2160p@30/60				
		VESA	800×600@60 1024×768@60 1280×768@60 1280×800@60 1280×1024@60 1360×768@60 1366×768@60 1400×900@60 1600×1050@60 1600×1200@60 1680×1050@60 1920×1080@60 1920×1200@60 2048×1080@60 2048×1152@60 2560×812@60 2560×960@60 2560×1600@60 3840×1080@60 3840×2160@30 3840×2160@60				
		DVI HDBaseT					
		SMPTE	720p@23.98/24/25/29.97/30/50/59.94/60 1080p@239.98/24/25/29.97/30/50/59.94/60 1080psf@23.8/24/25/29.7/30				
		VESA	800×600@60 1024×768@60 1280×768@60 1280×960@60 1280×1024@60 1360×768@60 1440×900@60 1400×1050@60 1600×1200@60 1680×1050@60 1920×1080@60 2048×1080@60 2048×1152@60				
		CVBS					
		SMPTE	480i 576i				
		VGA					
		VESA	800×600@60 1024×768@60 1280×960@60 1280×1024@60 1360×768@60 1400×1050@60 1440×900@60 1600×1200@60 1680×1050@60 1920×1080@60				
		H.264	176×144 240×180 320×180 320×240 320×256 352×228 352×480 400×224 400×320 480×270 480×272 480×320 480×360 480×480 544×480 608×448 640 × 360 640×480 704×576 720×404 720×480 720×540 720×576 850×480 1024×576 1280×720 1680×1056 1920×1080				
		Output Resolutions	Select from below or configure customized				
			SDI				
	SMPTE		720p@23.98/24/25/29.97/30/50/59.94/60 1080p@23.98/24/25/29.97/30/50/59.94/60 1080psf@23.8/24/25/29.7/30 2160@30/50				
	DVI HDBaseT						
	SMPTE		720p@50/59.94/60 1080p@50/59.94/60				
	VESA		800×600@60 1024×768@60/75/85 1280×720@50/59.94/60 1280×800@60 1280×960@60 1280×1024@60/75/85 1400×1050@60 1600×1200@60 1920×1080@23.98/24/25/29.97/30/50/59.94/60 2048×1152@60				
	H.264 (PVW)						
			176×144 240×180 320×180 320×240 320×256 352×228 352×480 400×224 400×320 480×270 480×272 480×320 480×360 480×480 544×480 608×448 640 × 360 640×480 704×576 720×404 720×480 720×540 720×576 850×480 1024×576 1280×720 1680×1056 1920×1080				
	HDMI						
	SMPTE		720p@25/30/50/60 1080p@23.98/24/25/29.97/30/50/59.94/60 2160p@23.98/24/25/29.97/30/50/60				
	VESA	800×600@60 1024×768@60 1280×768@60 1280×800@60 1280×1024@60 1360×768@60 1366×768@60 1400×900@60 1600×1050@60 1600×1200@60 1680×1050@60 1920×1080@60 1920×1200@60 2048×1152@60 2560×812@60 2560×816@60 2560×1600@60 3840×1080@60 3840×2160@ 4096×2160@60					
	Supported Standard	SDI	SMPTE ST 2082-1, SMPTE ST 2081-1, SMPTE ST 424, SMPTE ST 292-1, SMPTE ST 259, DVB-ASI, MADI				
		HDMI	2.0				
DP		1.2	1.0				
DVI		Dual Link					
HDBaseT		1.0					
Grey Level	12 bit						
Color Space	4:4:4						
Power	Input Voltage	AC 100V-240V, 50/60Hz		Max Power	400W		
Environment	Temperature	0°C ~ 55°C		Hudmidity	10% - 90%		
Physical	Weight	Net (Device)	12.3kg	Dimension	Net (Device)	485mmx387mmx135mm	
		Packaged	20.4ka		Packaged	635mmx545mmx275mm	

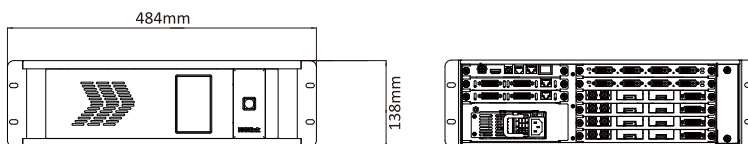
Order Codes

Product Code	Item
310-1003-11-0	X3p

*Refer to specifications for module options

HDMI® HDCP™

Dimensions



WEB: www.rgblink.com EMAIL: sales@rgblink.com PHONE: +86 592 5771197

Proudly designed and manufactured in **Xiamen** Hi Technology Zone, China

RGBlink®



www.rgblink.com