

# VSP 9516S

## Integrated Seamless Scaler



VSP9516S uniquely integrates video scaling technologies and LED Display Sender Cards allowing PC free set up and configuration of LED displays in an efficient easy to use single device.

### All the Features

Three composite (CVBS) inputs, DVI, S-Video, VGA, Composite (YPbPr), DisplayPort and SDI, VSP9516S includes a wide range of popular inputs on board. Plus audio input is also supported.

Switch seamlessly between any input - inputs can be converted, scaled, transcoded to the DVI outputs and to Sender Cards.

Any input can be assigned to PIP, and a range of PIP formats are available. A wide range of transitions are built-in for both cut/fade and dynamic effect.

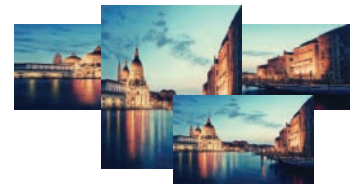
### LED Sender Cards Built-in

Available with either dual ColorLight or dual Linsn integrated Sender Cards, VSP9516S allows direct on board setting of key LED display settings that are usually only available via PC software. With VSP9516 set not only Display Connection, but also Display Area, Port Offsets, Brightness and Gamma attributes of each Sender Card. From the front panel of VSP9516 see Power and Signal status of each Sender Card.

### Robust Design

Built with rental applications in mind, VSP9516 features large illuminated buttons, bright OLED display and proven RGBlink solid construction. Cat5e connections to LED Displays are via EtherCon connections. Large rack handles both make transport easy and assist in protecting the front panel.

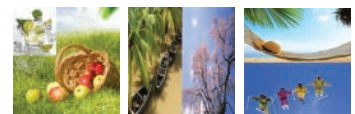
### Scaling



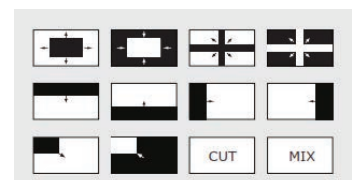
### Sender Cards Built-In

>CHOOSE CABLE	PORT U
HORIZONTAL CARD	2
VERTICAL CARD	3
WIDTH	120

### PIP Modes

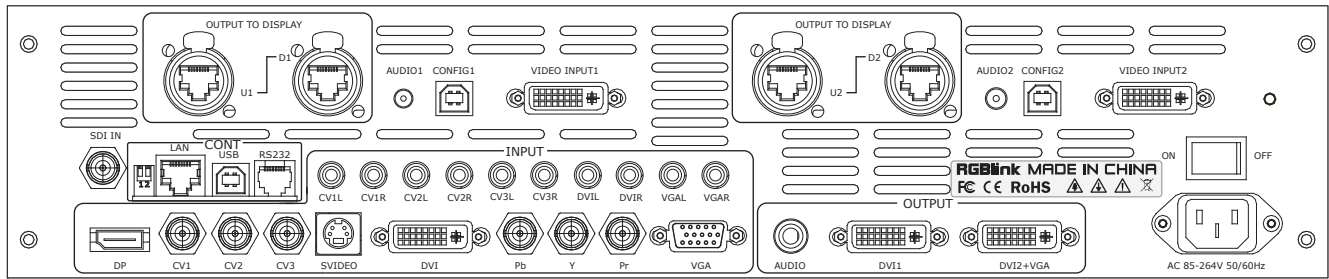


### Transitions



### Audio Control

*MUTE	OFF
VOLUME	50
AUDIO IN	IMAGE A
HDMI	INTERNAL



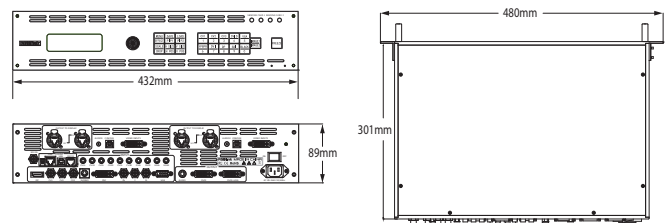
## Specifications

<b>Features</b>	Output Channels	1
	PIP	1 (3 layouts)
	Text Overlay	On/Via PIP
	Display Control	Scale, Crop, Position, Mask
	Visual Effects	Brightness, Contrast, Saturation, Sharpness ,
	Transitions	Fade, Cut, POP L+T, PUSH L+T, POP R+T, PUSH R+T, POP L+B, PUSH L+B, POP R+B, PUSH R+B, POP CENTRE, PUSH CENTRE, POP LEFT, PUSH LEFT, POP RIGHT, PUSH RIGHT, POP TOP, PUSH TOP, POP BOTTOM, PUSH BOTTOM
	Test Patterns	66 Patterns including H Ramp, V Ramp, 100% Color Bar, 75% Color Bar, 16x16 Grid, Burst, 50% Gray, Grey Step 1, Gray Step 2, White, Black, SMPTE Color Bar, Logo., Flat/Single colours
	Sender Card Support	Two Integrated dual port Sender Cards
	Sender Card Control	Full support for ColorLight and Linsn
	Audio	Input on all inputs (excluding composite/YPbPr), Output via ¼in Stereo Jack
<b>Performance</b>	Input Resolution	CVBS: 480i   576i S-Video: 480i   576i YPbPr: 480i   576i   480p   576p   720p@50/60   1080i@50/60   1080p@50/60 SDI: 480i   576i   720p@50/60   1080i@59.94/60   1080p@23.98/24/25/29.97/30/59/59.94/60   1080psf@23.98/24/25/29.97/30/59/59.94/60 VGA: 800x600@60   1024x768@60   1280x720@60   1280x800@60   1280x960@60   1280x1024@60   1366x768@60   1400x1050@60   1440x900@60   1600x1200@60   1680x1050@60   1920x1080@60 DVI / HDMI: SMPTE: 625@25/50 PAL   525@29.97/59.94 NTSC 720p@50/59.94/60   1080p@50/59.94/60   1080i@50/59.94/60 VESA: 800x600@60   1024x768@60   1280x768@60   1280x1024@60   1600x1200@60 1920x1080@60 DP: SMPTE: 480p   576p   720p @50/59.94/60   1080p@50/59.94/60   1080i@50/59.94/60 VESA: 800x600@60   1024x768@60   1280x768@60   1280x1024@60   1600x1200@60   1920x1080@60
	Output Resolution	Select from standard set or select user configurable SMPTE: 720p@50/60   1920x1080@50/60 VESA: 800x600@60   1024x768@60/75   1280x720@60/60   1280x800@60   1280x1024@60 1366x768@60   1366x768@60   1400x1050@60 1440x900@60   1600x1200@60   1680x1050@60, 1920x1080@60   1920x1200@60   2048x1152@60   2560x816@60 <i>*not all resolutions supported on VGA</i>
	Refresh Rates	50   60   75
	Standards Supported	CVBS: PAL   NTSC S-Video: PAL   NTSC SDI: SMPTE 424M   SMPTE 292M   SMPTE 259M-C VGA: VGA-UXGA DVI: 1.0 HDMI: 1.3 DP: 1.0
	Grayscale Processing	12bit
<b>Connectors</b>	Video Input	7 x BNC (CVBS/YPbPr/SDI) 1 x DB15 (VGA) 1xDVI(compatible HDMI) 1 x DisplayPort
	Video Output	2xDVI 1xVGA(By DVI Interface)
	Power	IEC
	Update	USB B / RJ11
	LAN	RJ45
<b>Power</b>	Input Voltage	AC 85-264V 50/60Hz
	Max Power	25W
<b>Operation</b>	Temperature	0-45°C
	Humidity	10-85% RH
<b>Physical</b>	Weight	5.2kg (nett) 8.6kg (packaged)
	Dimensions	480 x 331 x 89mm (device) 585 x 405 x 195mm (packaged)

## Order Codes

Product Code	Item
100-9516-01-0	VSP9516S with Linsn Sender Cards
100-9516-02-0	VSP9516S with ColorLight Sender Cards

## Dimensions



WEB: [www.rgblink.com](http://www.rgblink.com) EMAIL: [sales@rgblink.com](mailto:sales@rgblink.com) PHONE: +86 592 5771197

Proudly designed and manufactured in **Xiamen Hi Technology Zone, China**

**RGBlink**™