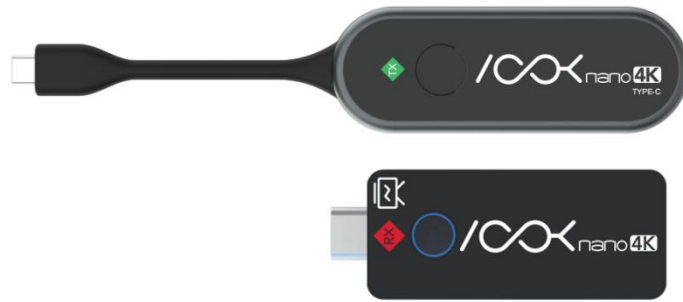


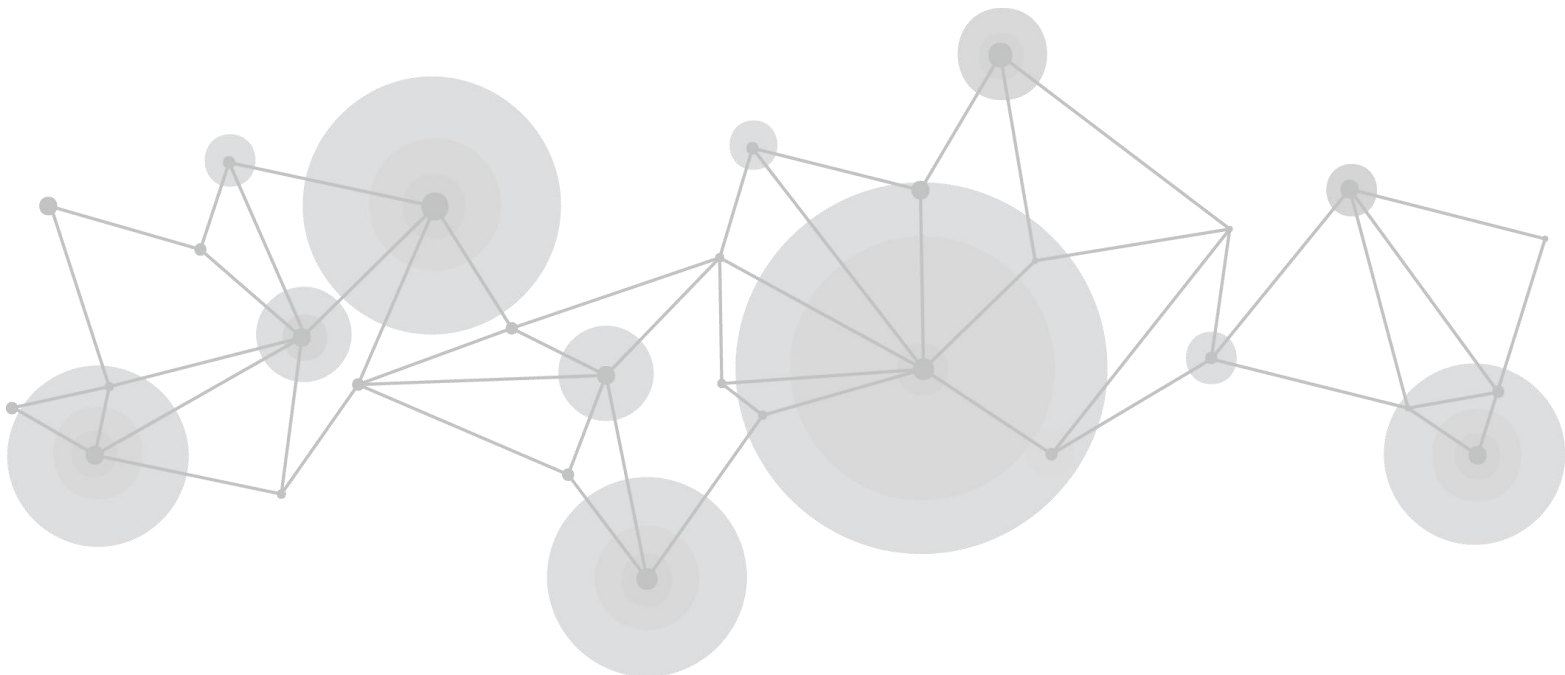
# ASK nano 4K (USB-C)

Wireless Presentation and Collaboration System



## User Manual

**RGBlink<sup>®</sup>**



Article No: RGB-RD-UM-ASK nano 4K E000

Revision No: V1.0

---

# Content

<i>Declarations</i> .....	3
FCC/Warranty .....	3
Operators Safety Summary .....	4
Installation Safety Summary .....	5
<i>Chapter 1 Your Product</i> .....	7
1.1 In the Box .....	7
1.2 Product Overview .....	7
1.3 Interface .....	9
1.4 Dimensions .....	12
<i>Chapter 2 Use Your Product</i> .....	13
2.1 Receiver Installation .....	13
2.2 Transmitter Installation .....	13
2.3 Pairing a Transmitter and Receiver .....	14
2.4 Phone Screen Projection .....	14
2.4.1 iOS .....	15
2.4.2 Android .....	15
2.5 Connect to Internet .....	16
2.6 AP Password Management .....	18
2.7 Language .....	19
2.8 Screen Position .....	19
2.9 AirPlay Mode .....	19

---

<i>Chapter 3 Order Codes</i> .....	20
3.1 Product Code .....	20
<i>Chapter 4 Support</i> .....	21
4.1 Contact Us.....	21
<i>Chapter 5 Appendix</i> .....	22
5.1 Terms & Definitions .....	22
5.2 Revision History .....	32

---

**Thank you for choosing our product!**

**This User Manual is designed to show you how to use this product quickly and make use of all the features. Please read all directions and instructions carefully before using this product.**

## *Declarations*

### FCC/Warranty

#### **Federal Communications Commission (FCC) Statement**

This equipment has been tested and found to comply with the limits for a class A digital device, pursuant to Part 15 of the FCC rules. These limits are designed to provide reasonable protection against harmful interference when the equipment is operated in a commercial environment. This equipment generates, uses, and can radiate radio frequency energy and, if not installed and used in accordance with the instruction manual, may cause harmful interference to radio communications. Operation of this equipment in a residential area may cause harmful interference, in which case the user will be responsible for correcting any interference.

#### **Guarantee and Compensation**

RGBlink provides a guarantee relating to perfect manufacturing as part of the legally stipulated terms of guarantee. On receipt, the purchaser must immediately inspect all delivered goods for damage incurred during transport, as well as for material and manufacturing faults. RGBlink must be informed immediately in writing of any complains.

---

The period of guarantee begins on the date of transfer of risks, in the case of special systems and software on the date of commissioning, at latest 30 days after the transfer of risks. In the event of justified notice of compliant, RGBlink can repair the fault or provide a replacement at its own discretion within an appropriate period. If this measure proves to be impossible or unsuccessful, the purchaser can demand a reduction in the purchase price or cancellation of the contract. All other claims, in particular those relating to compensation for direct or indirect damage, and also damage attributed to the operation of software as well as to other service provided by RGBlink, being a component of the system or independent service, will be deemed invalid provided the damage is not proven to be attributed to the absence of properties guaranteed in writing or due to the intent or gross negligence or part of RGBlink.

If the purchaser or a third party carries out modifications or repairs on goods delivered by RGBlink, or if the goods are handled incorrectly, in particular if the systems are commissioned operated incorrectly or if, after the transfer of risks, the goods are subject to influences not agreed upon in the contract, all guarantee claims of the purchaser will be rendered invalid. Not included in the guarantee coverage are system failures which are attributed to programs or special electronic circuitry provided by the purchaser, e.g. interfaces. Normal wear as well as normal maintenance are not subject to the guarantee provided by RGBlink either.

The environmental conditions as well as the servicing and maintenance regulations specified in this manual must be complied with by the customer.

## Operators Safety Summary

The general safety information in this summary is for operating personnel.

---

## **Do Not Remove Covers or Panels**

There are no user-serviceable parts within the unit. Removal of the top cover will expose dangerous voltages. To avoid personal injury, do not remove the top cover. Do not operate the unit without the cover installed.

## **Power Source**

This product is powered by USB on TX end and DC 5V at RX end.

## **Do Not Operate in Explosive Atmospheres**

To avoid explosion, do not operate this product in an explosive atmosphere.

# Installation Safety Summary

## **Safety Precautions**

For all ASK nano installation procedures, please observe the following important safety and handling rules to avoid damage to yourself and the equipment.

To protect users from electric shock, ensure that the chassis connects to earth via the ground wire provided in the AC power Cord.

The AC Socket-outlet should be installed near the equipment and be easily accessible.

## **Unpacking and Inspection**

Before opening ASK nano processor shipping box, inspect it for damage. If you find any damage, notify the shipping carrier immediately for all claims adjustments. As you open the box, compare its contents against the packing slip. If you find any shortages, contact your sales representative.

Once you have removed all the components from their packaging and checked that all the listed components are present, visually inspect the system to ensure there was no damage during

---

shipping. If there is damage, notify the shipping carrier immediately for all claims adjustments.

## **Site Preparation**

The environment in which you install your ASK nano should be clean, properly lit, free from static, and have adequate power, ventilation, and space for all components.

---

# Chapter 1 Your Product

---

## 1.1 In the Box



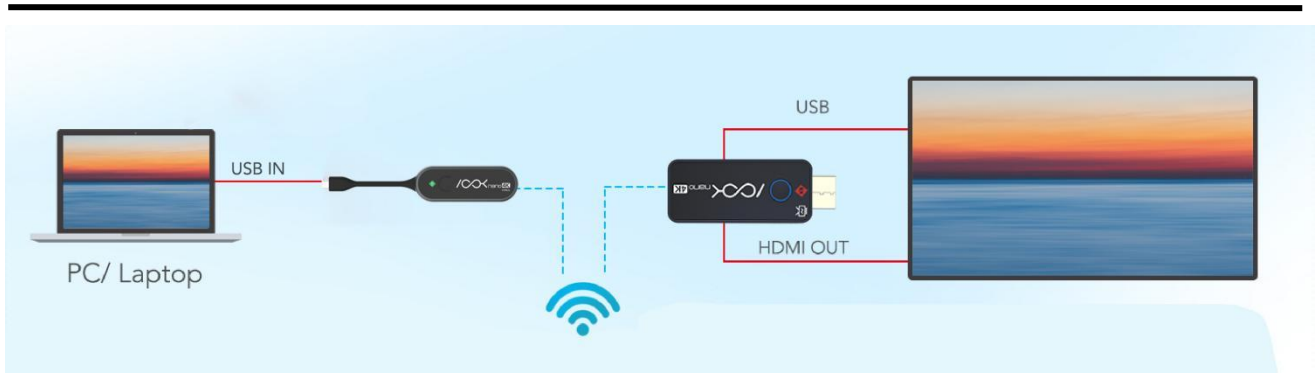
## 1.2 Product Overview

ASK nano 4K (USB-C) is an intuitive and high efficiency **4K wireless** presentation and collaboration system that enables any meeting participant to simply share the content from their laptop, mobile phone, or tablet on the projector or large screen wirelessly, no APP required, no set up, no messy cables, just click and share.

A standard ASK nano 4K (USB-C) is a combination of one transmitters and one receiver, the receiver is connected to a projector or display, and the USB-C male interface of the transmitter is connected to the USB-C port of the PC.

Never have to worry about the software configuration, no compatibility, WIFI and network set up, no need IT support, with our powerful and simplicity solution, everyone can immediately know how to use it for collaborative presentations, which significantly improves corporate efficiency and productivity.



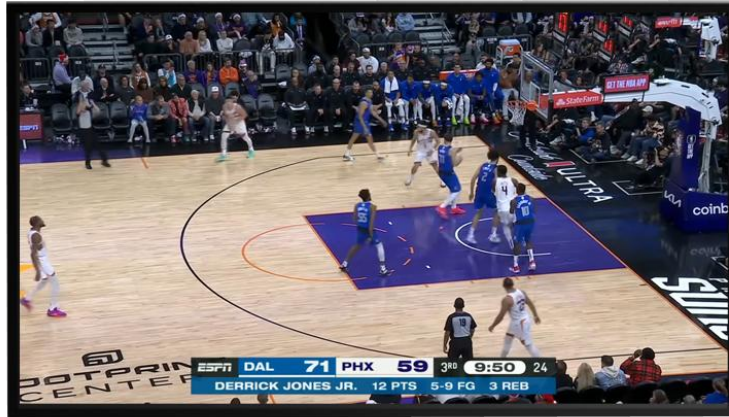


**ASK nano 4K (USB-C) System Connection Diagram 1**



**iPhone 15 Plus & ASK nano 4K (USB-C)**

**ASK nano 4K (USB-C) System Connection Diagram 2**



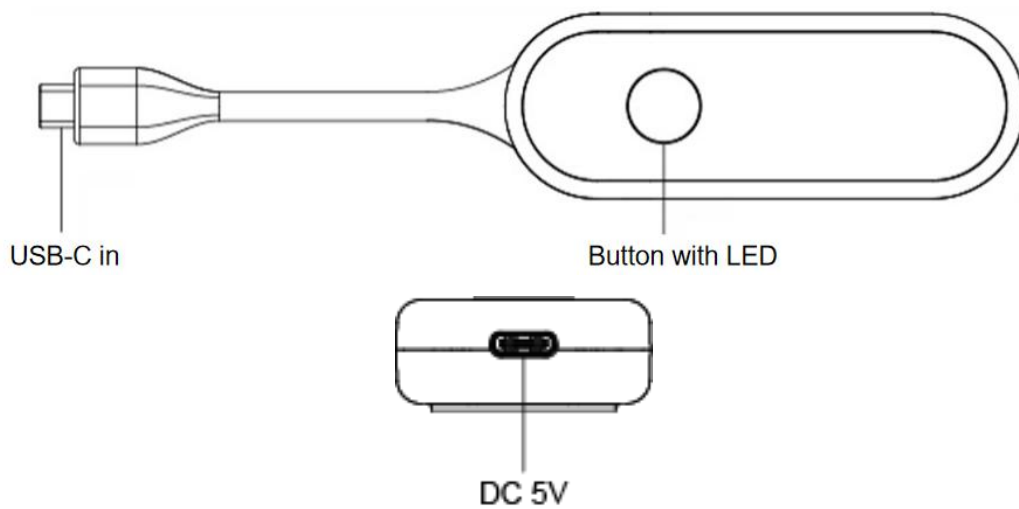
## iPhone 15 Plus & ASK nano 4K (USB-C)



ASK nano 4K (USB-C) System Connection Diagram 3

## 1.3 Interface

### Transmitter Illumination

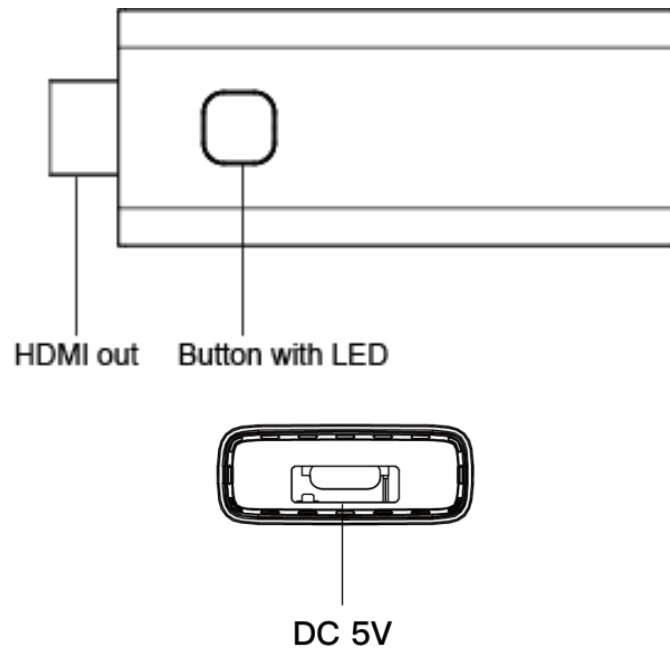


Item	Illumination
USB-C in	Connect with the USB-C port of the source devices (*Note: USB- C interface of the video source must support the DP protocol (DisplayPort))
Button	Click to discontinue projection or resume projection
USB-C Jack	<ul style="list-style-type: none"> <li>• Connected to 5V/1A adapter for power supply</li> <li>• Reverse power supply supported to provide power to the signal source when the power adapter of the signal source is connected</li> </ul>

## Indicator light of Transmitter

TX	Illumination
Static Red	TX system is booting on
Flashing Red	TX is searching for RX
Flashing Blue	Waiting for the connection
Static blue	Connected and start to presenting
Purple	No signal resource

## Receiver Illumination



Item	Illumination
HDMI OUT	Connect with monitor or projector
Button	Short press to switch mode between TX/DLNA/Airplay Mode and Miracast Mode
LED	To display different status
USB-C Jack	For power supply

## Indicator light of Receiver

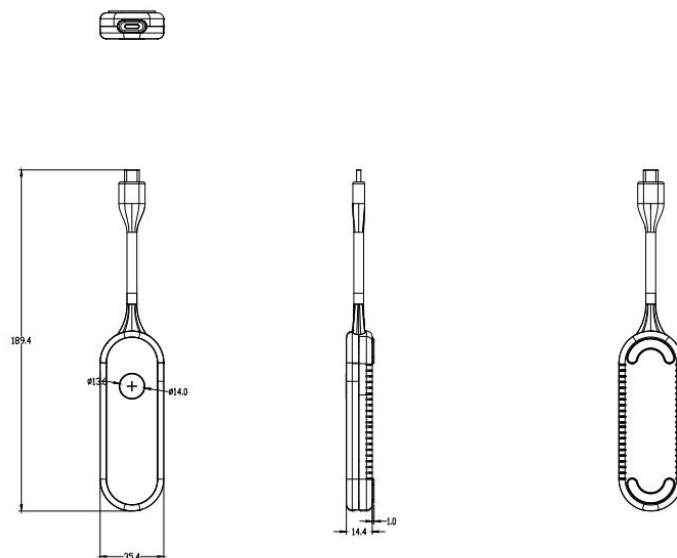
RX	Illumination
Flashing Blue	Waiting for connection
Static blue	Connected and start to presenting

---

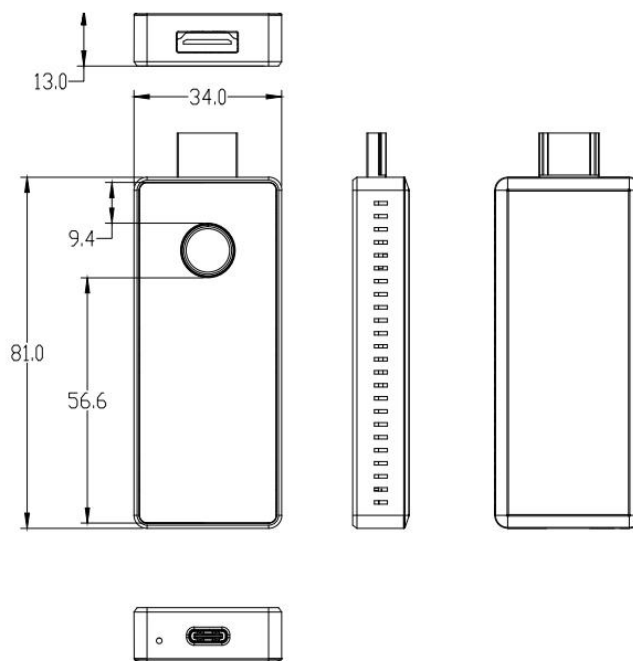
## 1.4 Dimensions

Following is the dimension of ASK nano 4K (USB-C) for your reference:

93mm×28.3mm×13mm (TX) (cable excluded)



83mm×32mm×13mm (RX)



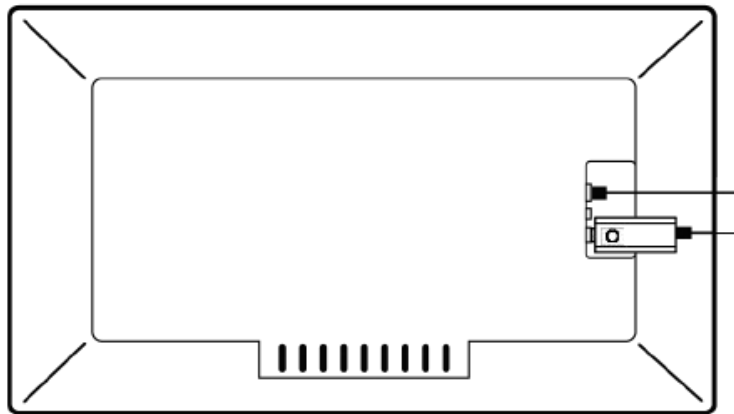
---

## Chapter 2 Use Your Product

---

### 2.1 Receiver Installation

1. Connect the RX with HDMI port of display.
2. Connect the USB-C port of RX to the TV USB port through the USB cable for power supply.



**Note:** The power supply of RX is about 5V/1A. Please connect the RX with a 5V/1A power adapter if your TV can't supply enough power.

### 2.2 Transmitter Installation

1. Connect ASK nano 4K (USB-C) TX' s USB-C jack to USB-C output on PC or other source device.



2. The LED indicator of the ASK nano 4K (USB-C) TX will turn red when it' s booting up.

- 
3. The LED indicator will become blue and flash when ASK nano 4K (USB-C) is ready to stream.
  4. Wait and the system will automatically to stream. After it is successfully connected, the LED indicator turns to static blue.

**Note:** Not every USB-C interface supports ASK nano 4K (USB-C) TX, only the device support DP 1.3 or above can export the video to TX for wireless transmission. DO NOT connect TX to traditional USB-C interface.

## 2.3 Pairing a Transmitter and Receiver

A standard ASK nano 4K (USB-C) set includes one receiver and one transmitter, which are paired before shipment. Normally you don't need to pair them again.

However, if the failed connection between TX and RX is not because of the signal source, you can refer to following steps to pair TX and RX again.

1. Power on TX, then long press the TX button till it flashes red light quickly. Release the button, TX will clear the previous pairing information.
2. TX will reboot automatically and pair to the first RX found, therefore, when you do the pairing, make sure except the dedicated RX, other RX around are off within 50 meters.

## 2.4 Phone Screen Projection

ASK nano 4K (USB-C) supports casting screen from smart devices. iOS requires version 9.0 or above, and Android requires version 5.0 or above.

**Note:** iOS requires version 9.0 or above, and Android requires version 5.0 or above.

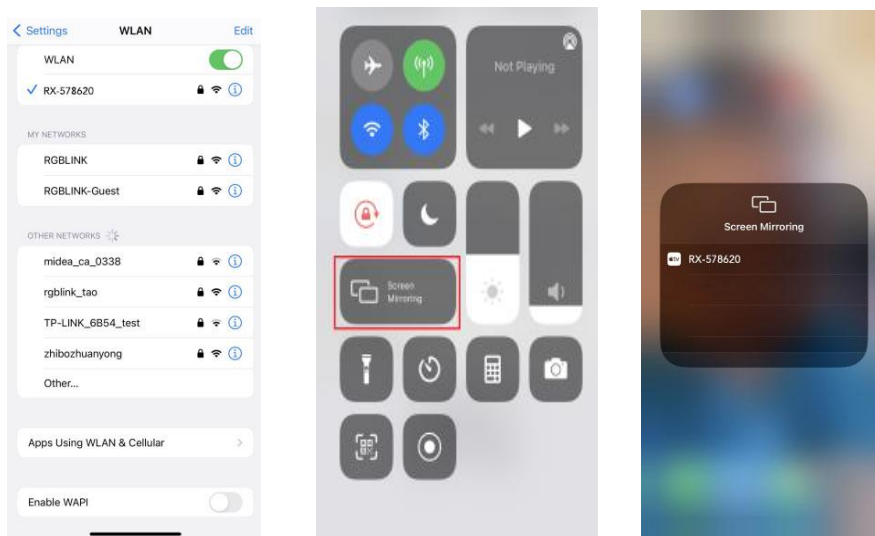
---

## 2.4.1 iOS

1. Search RX SSID and connect. (SSID: ASK nano 4Kxxxx, Password: 12345678), the SSID is shown on the right upper corner of the screen.

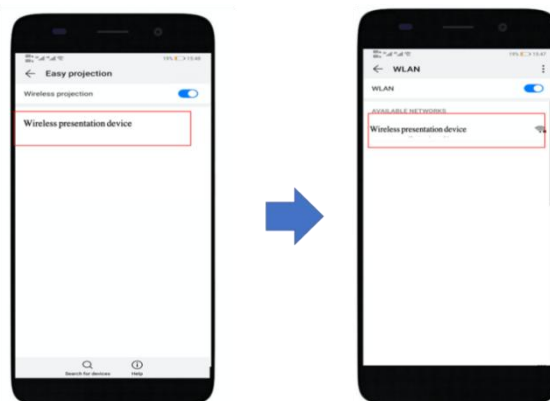
**Note:** If ASK nano 4K (USB-C) RX is connected to Internet, you need to keep device connected to the same network as ASK nano 4K (USB-C) RX.

2. From Quick Settings, select **Screen Mirroring** to mirror the device screen.



## 2.4.2 Android

Press button on RX to switch it to Miracast mode. Make sure your Android devices Wi-Fi are available, and select the **Wireless Projection Function** of your phone and start to stream.





**Note:** there are different name on difference brand phones or tablets: WIFI Display, WLAN Display, Wireless Display, Allshare Display, Allshare Cast, Mirror Monitoring, Miracast.

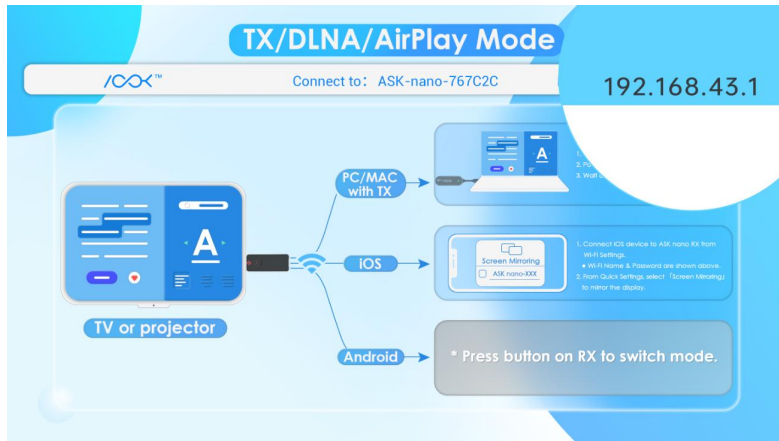
## 2.5 Connect to Internet

When your iOS or Android device needs to connect to Internet but is not able to use cellular data, such as iPad or or other tablets, it is necessary to connect your ASK nano 4K (USB-C) RX to Internet.

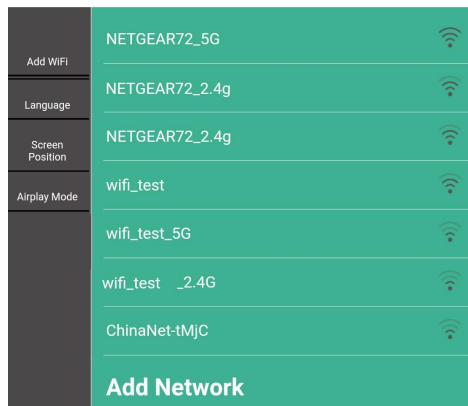
1. Connect the RX SSID with your smart device, the SSID and password are shown in the middle of the screen.



2. Open the browser with your phone, and input the IP address shown on the right upper corner of the screen to enter to the ASK nano 4K (USB-C) RX management platform.

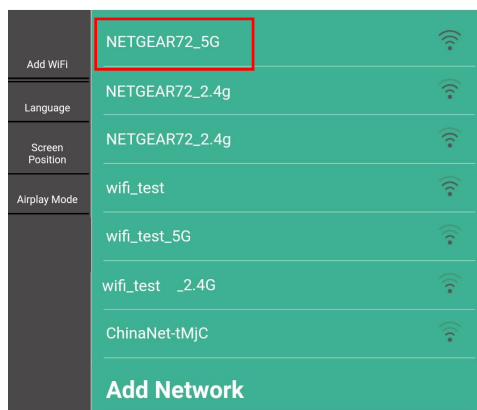


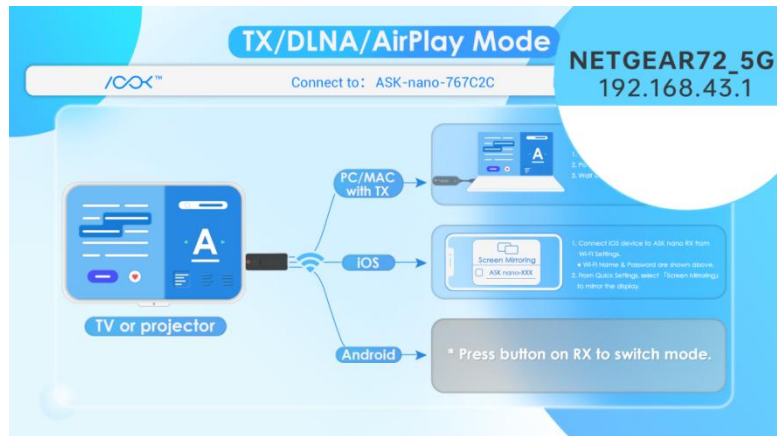
192.168.43.1



3. Select the network and connect in the management platform, the RX will link to the network and show the network SSID on the upper right corner of the screen.

192.168.43.1

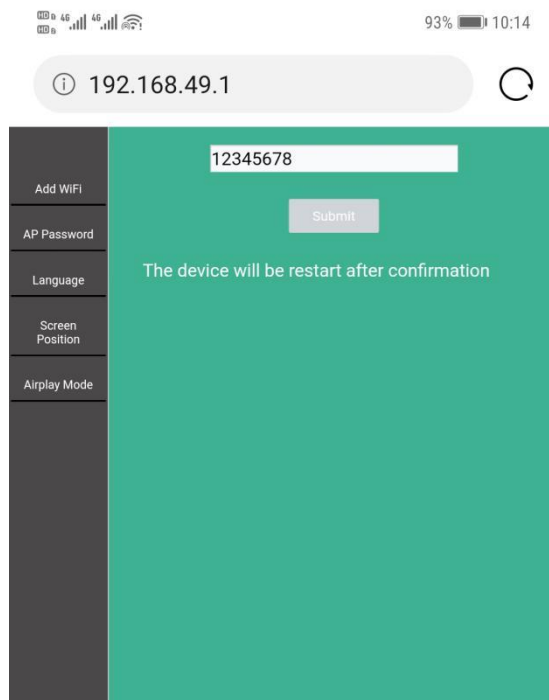




**Note:** To get a better performance, we recommend to connect with 5G router. When connected to router, the IP address will be updated accordingly.

## 2.6 AP Password Management

User can change AP password in the management page.



**Note:** If the password are changed, the TX and RX have to pair again.

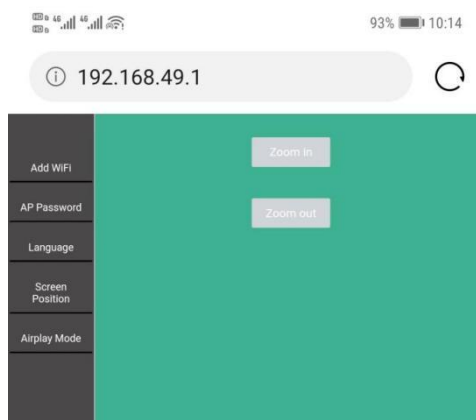
---

## 2.7 Language

User can change language in the management page. ASK nano 4K (USB-C) supports user interface displayed in English or Chinese.

## 2.8 Screen Position

If the RX HDMI OUT size is not compatible with the display, user can use Screen Position to adjust the zoom in and zoom out the screen.



## 2.9 AirPlay Mode

For devices that support AirPlay, users can select the screen projection mode of "Mirror" or "Streaming."

---

## *Chapter 3 Order Codes*

---

### 3.1 Product Code

450-2003-01-0 ASK nano 4K (USB-C) Set (TX\*1+RX\*1)

---

# Chapter 4 Support

---

## 4.1 Contact Us

[www.rgblink.com](http://www.rgblink.com)



### Inquiries

+86-592-577-1197  
info@rgblink.com  
[rgblink.com/contact-us](http://rgblink.com/contact-us)

### Global Support

support@rgblink.com  
[rgblink.com/support-me](http://rgblink.com/support-me)



@RGLINK



/rgblink



+rgblink



/rgblink



rgblink



rgblink

### RGBlink Headquarters

Xiamen, China

Room 601A, No. 37-3  
Banshang community,  
Building 3, Xinke Plaza, Torch  
Hi-Tech Industrial  
Development Zone, Xiamen,  
China

+86-592-577-1197

### China Regional Sales & Support

Shenzhen, China

705, 7th Floor, South District,  
Building 2B, Skyworth  
Innovation Valley, No. 1  
Tangtou Road, Shiyuan Street,  
Baoan District, Shenzhen City,  
Guangdong Province

+86-755 2153 5149

### Beijing Region Office

Beijing, China

Building 8, 25 Qixiao Road  
Shahe Town Changping

+010- 8577 7286

### Europe Regional Sales & Support

Eindhoven, Holland

Flight Forum Eindhoven  
5657 DW

+31 (040) 202 71 83

---

# Chapter 5 Appendix

---

## 5.1 Terms & Definitions

● **RCA:** Connector used primarily in consumer AV equipment for both audio and video. The

RCA connector was developed by the Radio Corporation of America.

● **BNC:** Stands for Bayonet Neill-Concelman. A cable connector used extensively in television (named for its inventors). A cylindrical bayonet connector that operates with a twist-locking motion.

● **CVBS:** CVBS or Composite video, is an analog video signal without audio. Most commonly CVBS is used for transmission of standard definition signals. In consumer applications the connector is typically RCA type, while in professional applications the connector is BNC type.

● **YPbPr:** Used to describe the colour space for progressive-scan. Otherwise known as component video.

● **VGA:** Video Graphics Array. VGA is an analog signal typically used on earlier computers. The signal is non-interlaced in modes 1, 2, and 3 and interlaced when using in mode.

● **DVI:** Digital Visual Interface. The digital video connectivity standard that was developed by DDWG (Digital Display Work Group). This connection standard offers two different connectors: one with 24 pins that handles digital video signals only, and one with 29 pins that handles both digital and analog video.

● **SDI:** Serial Digital Interface. Standard definition video is carried on this 270 Mbps data transfer rate. Video pixels are characterized with a 10-bit depth and 4:2:2 color quantization. Ancillary data is included on this interface and typically includes audio or other metadata. Up to sixteen audio channels

---

can be transmitted. Audio is organised into blocks of 4 stereo pairs. Connector is BNC.

- **HD-SDI:** High-definition serial digital interface (HD-SDI), is standardized in SMPTE 292M this provides a nominal data rate of 1.485 Gbit/s.
- **3G-SDI:** Standardized in SMPTE 424M, consists of a single 2.970 Gbit/s serial link that allows replacing dual link HD-SDI.
- **6G-SDI:** Standardized in SMPTE ST-2081 released in 2015, 6Gbit/s bitrate and able to support 2160p@30.
- **12G-SDI:** Standardized in SMPTE ST-2082 released in 2015, 12Gbit/s bitrate and able to support 2160p@60.
- **U-SDI:** Technology for transmitting large-volume 8K signals over a single cable. a signal interface called the ultra high definition signal/data interface (U-SDI) for transmitting 4K and 8K signals using a single optical cable. The interface was standardized as the SMPTE ST 2036-4.
- **HDMI:** High Definition Multimedia Interface: An interface used for the transmission of uncompressed high definition video, up to 8 channels of audio, and control signals, over a single cable.
- **HDMI 1.3:** released on June 22 2006, and increased the maximum TMDS clock to 340 MHz (10.2 Gbit/s). Support resolution 1920 × 1080 at 120 Hz or 2560 × 1440 at 60 Hz). It added support for 10 bpc, 12 bpc, and 16 bpc color depth (30, 36, and 48 bit/px), called deep color.
- **HDMI 1.4 :** released on June 5, 2009, added support for 4096 × 2160 at 24 Hz, 3840 × 2160 at 24, 25, and 30 Hz, and 1920 × 1080 at 120 Hz. Compared to HDMI 1.3, 3 more features added which are HDMI



---

Ethernet Channel (HEC) , audio return channel (ARC),3D Over HDMI, a new Micro HDMI Connector, an expanded set of color spaces.

●**HDMI 2.0:** Released on September 4, 2013 increases the maximum bandwidth to 18.0 Gbit/s. Other features of HDMI 2.0 include up to 32 audio channels, up to 1536 kHz audio sample frequency, the HE-AAC and DRA audio standards, improved 3D capability, and additional CEC functions.

●**HDMI 2.0a:** Was released on April 8, 2015, and added support for High Dynamic Range (HDR) video with static metadata.

●**HDMI 2.0b:** Was released March, 2016, support for HDR Video transport and extends the static metadata signaling to include Hybrid Log-Gamma (HLG).

●**HDMI 2.1:** Released on November 28, 2017. It adds support for higher resolutions and higher refresh rates, Dynamic HDR including 4K 120 Hz and 8K 120 Hz.

●**DisplayPort:** A VESA standard interface primarily for video, but also for audio, USB and other data. DisplayPort (orDP) is backwards compatible with HDMI, DVI and VGA.

●**DP 1.1:** Was ratified on 2 April 2007, and version 1.1a was ratified on 11 January 2008. DisplayPort 1.1 allow a maximum bandwidth of 10.8 Gbit/s (8.64 Gbit/s data rate) over a standard 4-lane main link, enough to support 1920x1080@60Hz.

● **DP 1.2:** Introduced on 7 January 2010, effective bandwidth to 17.28 Gbit/s support increased resolutions, higher refresh rates, and greater color depth, maximum resolution 3840 × 2160@60Hz.

● **DP 1.4:** Publish on 1 Mar, 2016.overall transmission bandwidth 32.4 Gbit/s ,DisplayPort 1.4 adds support for Display Stream Compression 1.2 (DSC), DSC is a "visually lossless" encoding technique with

---

up to a 3:1 compression ratio. Using DSC with HBR3 transmission rates, DisplayPort 1.4 can support 8K UHD (7680 × 4320) at 60 Hz or 4K UHD (3840 × 2160) at 120 Hz with 30 bit/px RGB color and HDR. 4K at 60 Hz 30 bit/px RGB/HDR can be achieved without the need for DSC.

- **Multi-mode Fiber:** Fibers that support many propagation paths or transverse modes are called multi-mode fibers, generally have a wider core diameter and are used for short-distance communication links and for applications where high power must be transmitted.

- **Single-mode Fiber:** Fiber that support a single mode are called single-mode fibers. Single-mode fibers are used for most communication links longer than 1,000 meters (3,300 ft).

- **SFP:** Small form-factor pluggable, is a compact, hot-pluggable network interface module used for both telecommunication and data communications applications.

- **Optical Fiber Connector:** Terminates the end of an optical fiber, and enables quicker connection and disconnection than splicing. The connectors mechanically couple and align the cores of fibers so light can pass. 4 most common types of optical fiber connectors are SC, FC, LC, ST.

- **SC:** (Subscriber Connector), also known as the square connector was also created by the Japanese company – Nippon Telegraph and Telephone. SC is a push-pull coupling type of connector and has a 2.5mm diameter. Nowadays, it is used mostly in single mode fiber optic patch cords, analog, GBIC, and CATV. SC is one of the most popular options, as its simplicity in design comes along with great durability and affordable prices.

- **LC:** (Lucent Connector) is a small factor connector (uses only a 1.25mm ferrule diameter) that has a snap coupling mechanism. Because of its small dimensions, it is the perfect fit for high-density connections, XFP, SFP, and SFP+ transceivers.

- **FC:** (Ferrule Connector) is a screw type connector with a 2.5mm ferrule. FC is a round shaped

threaded fiber optic connector, mostly used on Datacom, telecom, measurement equipment, single-mode laser.

- **ST:** (Straight Tip) was invented by AT&T and uses a bayonet mount along with a long spring-loaded ferrule to support the fiber.


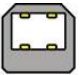








- **USB:** Universal Serial Bus is a standard that was developed in the mid-1990s that defines cables, connectors and communication protocols. This technology is designed to allow a connection, communication and power supply for peripheral devices and computers.

- **USB 1.1:** Full – Bandwidth USB, specification was the first release to be widely adopted by the consumer market. This specification allowed for a maximum bandwidth of 12Mbps.

- **USB 2.0:** Or Hi – Speed USB, specification made many improvements over USB 1.1. The main improvement was an increase in bandwidth to a maximum of 480Mbps.

- **USB 3.2:** Super Speed USB with 3 varieties of 3.2 Gen 1 (original name USB 3.0), 3.2 Gen 2 (original name USB 3.1), 3.2 Gen 2x2 (original name USB 3.2) with speed up to 5Gbps, 10Gbps, 20Gbps respectively.

USB version and connectors figure:

	Type A	Type B	Mini A	Mini B	Micro-A	Micro-B	Type C
USB 2.0							
USB 3.0							
USB 3.1 & 3.2							

- 
- **NTSC:** The colour video standard used in North America and some other parts of the world created by the National Television Standards Committee in the 1950s. NTSC utilizes an interlaced video signals.
  - **PAL:** Phase Alternate Line. A television standard in which the phase of the colour carrier is alternated from line to line. It takes four full images (8 fields) for the colour-to-horizontal images (8 fields) for the colour-to-horizontal phase relationship to return to the reference point. This alternation helps cancel out phase errors. For this reason, the hue control is not needed on a PAL TV set. PAL, is widely used in needed on a PAL TV set. PAL, is widely used in Western Europe, Australia, Africa, the Middle East, and Micronesia. PAL uses 625-line, 50-field (25 fps) composite colour transmission system.
  - **SMPTE:** Society of Motion image and Television Engineers. A global organization, based in the United States, that sets standards for baseband visual communications. This includes film as well as video and television standards.
  - **VESA:** Video Electronics Standards Association. An organization facilitating computer graphics through standards.
  - **HDCP:** High-bandwidth Digital Content Protection (HDCP) was developed by Intel Corporation and is in wide use for protection of video during transmission between devices.
  - **HDBaseT:** A video standard for the transmission of uncompressed video (HDMI signals) and related features using Cat 5e/Cat6 cabling infrastructure.
  - **ST2110:** A SMPTE developed standard, ST2110 describes how to send digital video over and IP networks. Video is transmitted uncompressed with audio and other data in a separate streams. SMPTE2110 is intended principally for broadcast production and distribution facilities where quality and

---

flexibility are more important.

- **SDVoE:** Software Defined Video over Ethernet (SDVoE) is a method for transmission, distribution and management AV signals using a TCP/IP Ethernet infrastructure for transport with low latency. SDVoE is commonly used in integration applications.

- **Dante AV:** The Dante protocol was developed for and widely adopted in audio systems for the transmission of uncompressed digital audio on IP based networks. The more recent Dante AV specification includes support for digital video.

- **NDI:** Network Device interface (NDI) is a software standard developed by NewTek to enable video-compatible products to communicate, deliver, and receive broadcast quality video in a high quality, low latency manner that is frame-accurate and suitable for switching in a live production environment over TCP (UDP) Ethernet based networks. NDI is commonly found in broadcast applications.

- **RTMP:** Real-Time Messaging Protocol (RTMP) was initially a proprietary protocol developed by Macromedia (now Adobe) for streaming audio, video and data over the Internet, between a Flash player and a server.

- **RTSP:** The Real Time Streaming Protocol (RTSP) is a network control protocol designed for use in entertainment and communications systems to control streaming media servers. The protocol is used for establishing and controlling media sessions between end points.

- **MPEG:** Moving Picture Experts Group is a working group formed from ISO and IEC developing standards that allow audio/video digital compression and Transmission.

- **H.264:** Also known as AVC (Advanced Video Coding) or MPEG-4i is a common video compression standard. H.264 was standardized by the ITU-T Video Coding Experts Group (VCEG) together with the ISO/IEC JTC1 Moving Picture Experts Group (MPEG).

- 
- **H.265:** Also known as **HEVC** (High Efficiency Video Coding) H.265 is the successor to the widely used H.264/AVC digital video coding standard. Developed under the auspices of ITU, resolutions up to 8192x4320 may be compressed.
  - **API:** An Application Programming Interface (API) provides a predefined function which allows access capabilities and features or routines via a software or hardware, without accessing source code or understanding the details of inner working mechanism. An API call may execute a function and/or provide data feedback/report.
  - **DMX512:** The communication standard developed by USITT for entertainment and digital lighting systems. The wide adoption of the Digital Multiplex (DMX) protocol has seen the protocol used for a wide range of other devices including video controllers. DMX512 is delivered over cable of 2 twisted pairs with 5pin XLR cables for connection.
  - **ArtNet:** An ethernet protocol based on TCP/IP protocol stack, mainly used in entertainment/events applications. Built on the DMX512 data format, ArtNet enables multiple “universes” of DMX512 to be transmitted using ethernet networks for transport.
  - **MIDI:** MIDI is the abbreviation of Musical Instrument Digital Interface. As the name indicates the protocol was developed for communication between electronic musical instruments and latterly computers. MIDI instructions are triggers or commands sent over twisted pair cables, typically using 5pin DIN connectors.
  - **OSC:** The principle of Open Sound Control (OSC) protocol is for networking sound synthesizers, computers, and multimedia devices for musical performance or show control. As with XML and JSON, the OSC protocol allows sharing data. OSC is transported via UDP packets between devices connected on an Ethernet.

- 
- **Brightness:** Usually refers to the amount or intensity of video light produced on a screen without regard to colour. Sometimes called black level.
  - **Contrast Ratio:** The ratio of the high light output level divided by the low light output level. In theory, the contrast ratio of the television system should be at least 100:1, if not 300:1. In reality, there are several limitations. Well-controlled viewing conditions should yield a practical contrast ratio of 30:1 to 50:1.
  - **Colour Temperature:** The colour quality, expressed in degrees Kelvin (K), of a light source. The higher the colour temperature, the bluer the light. The lower the temperature, the redder the light. Benchmark colour temperature for the A/V industry include 5000°K, 6500°K, and 9000°K.
  - **Saturation:** Chroma, Chroma gain. The intensity of the colour, or the extent to which a given colour in any image is free from white. The less white in a colour, the truer the colour or the greater its saturation. Saturation is the amount of pigment in a colour, and not the intensity.
  - **Gamma:** The light output of a CRT is not linear with respect to the voltage input. The difference between what you should have and what is actually output is known as gamma.
  - **Frame:** In interlaced video, a frame is one complete image. A video frame is made up of two fields, or two sets of interlaced lines. In a film, a frame is one still image of a series that makes up a motion image.
  - **Genlock:** Allows synchronisation of otherwise video devices. A signal generator provides a signal pulses which connected devices can reference. Also see Black Burst and Color Burst.
  - **Blackburst:** The video waveform without the video elements. It includes the vertical sync,

---

horizontal sync, and the Chroma burst information. Blackburst is used to synchronize video equipment to align the video output.

● **Colour Burst:** In colour TV systems, a burst of subcarrier frequency located on the back part of the composite video signal. This serves as a colour synchronizing signal to establish a frequency and phase reference for the Chroma signal. Colour burst is 3.58 MHz for NTSC and 4.43 MHz for PAL.

● **Colour Bars:** A standard test pattern of several basic colours (white, yellow, cyan, green, magenta, red, blue, and black) as a reference for system alignment and testing. In NTSC video, the most commonly used colour bars are the SMPTE standard colour bars. In PAL video, the most commonly used colour bars are eight full field bars. On computer monitors the most commonly used colour bars are two rows of reversed colour bars

● **Seamless Switching:** A feature found on many video switchers. This feature causes the switcher to wait until the vertical interval to switch. This avoids a glitch (temporary scrambling) which often is seen when switching between sources.

● **Scaling:** A conversion of a video or computer graphic signal from a starting resolution to a new resolution. Scaling from one resolution to another is typically done to optimize the signal for input to an image processor, transmission path or to improve its quality when presented on a particular display.

● **PIP:** Picture-In-Picture. A small image within a larger image created by scaling down one of image to make it smaller. Other forms of PIP displays include Picture-By-Picture (PBP) and Picture- With-Picture (PWP), which are commonly used with 16:9 aspect display devices. PBP and PWP image formats require a separate scaler for each video window .

● **HDR:** is a high dynamic range (HDR) technique used in imaging and photography to reproduce a greater dynamic range of luminosity than what is possible with standard digital imaging or



---

photographic techniques. The aim is to present a similar range of luminance to that experienced through the human visual system.

● **UHD:** Standing for Ultra High Definition and comprising 4K and 8K television standards with a 16:9 ratio, UHD follows the 2K HDTV standard. A UHD 4K display has a physical resolution of 3840x2160 which is four times the area and twice both the width and height of a HDTV/FullHD (1920x1080) video signal.

● **EDID:** Extended Display Identification Data. EDID is a data structure used to communicate video display information, including native resolution and vertical interval refresh rate requirements, to a source device. The source device will then output the provided EDID data, ensuring proper video image quality.

## 5.2 Revision History

The table below lists the changes of ASK nano 4K (USB-C) User Manual.

Format	Time	ECO#	Description	Principal
V1.0	2024-01-02	0000#	Release	Aster

All information herein is Xiamen RGBlink Science & Technology Co Ltd. excepting noted.

**RGBlink**® is a registered trademark of Xiamen RGBlink Science & Technology Co Ltd. While all efforts are made for accuracy at time of printing, we reserve the right to alter otherwise make change without notice.