



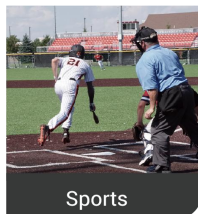
mini-edge-1s-subito

All-In-One Portable Case for mini-edge

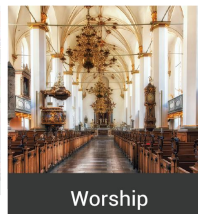
This Dedicated Portable Case made of high-strength PP material is equipped with one 13.3-inch IPS display, one switcher and one LED control card. Integrated audio and video switching, PTZ camera control, multi-view monitoring, recording, LED management in one case, this portable and shock-resistant carry case is perfect for all sites, from music festival to lawn wedding, sports competition and other outdoor activities.



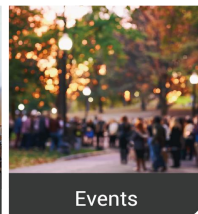
Education



Sports



Worship



Events

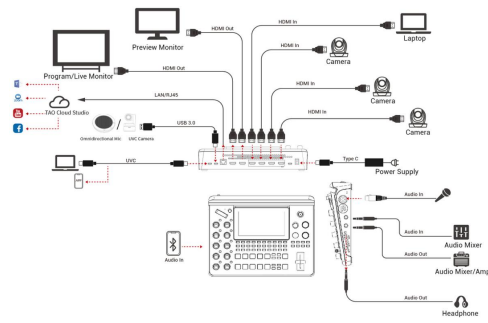


Conference

Key Features

- Professional aviation connector to ensure high-quality performance
- Flexible standard connectors to meet personalized application
- Built-in 13.3" HD IPS monitor
- High strength PP flightcase features long-lasting durability
- hydraulic rod support to enhance the stability
- Powerful air-cooling system designed for outdoor use
- Built-in 5.5 inch LCD screen for mini-edge
- Quad HDMI 2.0 inputs (HDCP compliance), resolutions up to 4K@60
- One USB (UVC) input supports camera source from RGBlink vue PTZ and webCAM
- Eight audio inputs with Four HDMI 2.0 embedded audio inputs and Four external audio inputs (one MIC, one LINE, one Bluetooth and one Type-C digital audio)
- Eight audio inputs allow for output of mixed audio across one or all available channels
- Dual HDMI 1.3 outputs for monitoring of multi-window PVW, PGM or AUX
- Dual audio out jacks for listening
- One-key recording. Recording capacity of hard drive is up to 2TB
- Support simultaneous streaming to 4 live streaming platforms via RTMP(S)
- Support multi-layer overlay, layer scaling and cropping
- 17 switching effect modes
- 5-direction joystick for controlling up to 4 PTZ cameras
- Support saving up to 10 scene presets and thumbnails for real-time full preview
- Web control and monitoring, compatible with mobile devices and computers, compatible with multiple operating systems
- Support Chroma Key
- 5G/4G Smartphone Tethering for iOS and Android system
- Air cooling design to ensure 24/7 stable operation
- XPOSE control

Application



Specification

Connectors	Input	HDMI 4K SDI UVC (webcam)	3xHDMI-A 1xBNC 1xUSB-C	
	Output	HDMI 2K SDI UVC USB (record) LAN (stream) LAN (subitio)	1xHDMI-A 1xBNC 1xUSB-C 1xUSB-C 1xRJ45 4xRJ45	
	Audio In	MIC LINE Bluetooth UAC HDMI SDI	1xCANNON Jack (XLR) 1x6.35mm TRS Jack 1xBluetooth Module 1xUSB-C 3xHDMI-A 1xBNC	
	Audio Out	AUDIO HDMI SDI UVC LAN USB (record)	1x6.35mm TRS Jack 1x3.5mm mini-Jack 1xHDMI-A 1xBNC 1xUSB-C 1xRJ45 1xUSB-C	
	Control	USB (subitio)	1xUSB-B	
Performance	Input Resolution	HDMI SDI	1280x720@50/59.94/60 1024x768@60 1280x768@60 1280x800@60 1280x1024@60 1360x768@60 1366x768@60 1440x900@60 1600x1200@60 1680x1050@60 1920x1200@60 1920x1080i@50/59.94/60 1920x1080p@23.98/24/25/29.97/30/50/59.94/60 3840x2160p@30/50/60 4096x2160p@30/50/60 1080P@23.98/24/25/29.97/30/50/59.94/60	
	Output Resolution	HDMI SDI USB (Webcam)	1280x720@50/60 1920x1080@60 3840x1080@30 1080P@23.98/24/25/29.97/30/50/59.94/60 1920x1080@24/25/30/50/60	
	Video	Video Formats Grayscale Processing Video Sampling Video Latency	HDMI 2.0 HDCP 2.2 10bit 4:4:4 YUV <4 frames	
	Audio	Line In Delay Audio Format	up to 8 frames HDMI Linear PCM, 24 bits/48 kHz, 2 ch USB Linear PCM, 16 bits/48 kHz, 2 ch	
	Record/Storage	Record Formats Disk Formats	MP4 FAT32(≤32 GB) exFAT(64GB~2T)	
	Supported Standards	HDMI USB H.265	2.0 3.0 ITU-T H.265/ ISO/IEC 23008-2	
	13.3" Display	Screen Size	13.3"	
		Panel Type	IPS	
		Display Color	16.7M, 72%NTSC/16.7M, 100%sRGB	
		Resolution	1920x1080 pixels	
Aspect Ratio		1000:1		
Gamut		72%		
Brightness		350 cd/m ²		
Refresh Rate	60Hz			
View Angle	85°/85°(L/R) 85°/85°(U/D)			
Subito	RJ45(each port)			
	Capacity	655,360 pixels		
	Horizontal Range	3840 pixels		
	Vertical Range	2048 pixels		
Power	Input Voltage	PD 12V/5A		
	Maximum Power	60W		
Physical	Outer Size	460mm × 360 mm × 200mm		
	Material	PP		
	Color	Black		
	Packaged Weight	9.23 kg		
Packaged Dimension	470mm × 370mm × 210mm			

Order Codes

Order Codes	Item
230-0006-05-0	mini-edge-1s-subito (1 × mini-edge + 1 × Flightcase Suite + 1 × 13.3" Display + 1 × subito Sending Card)

Contact us

Tel: +86-592-5771197
 Fax: +86-592-5788216
 E-mail: sales@rgblink.com
 Headquarter: Room 601A, No. 37-3 Banshang community, Building 3,
 Xinke Plaza, Torch Hi-Tech Industrial Development Zone, Xiamen, China

